

## **FINAL AGENCY DECISION**

CD-20V3-163  
December 23, 2020

In response to the Notice of Appeal, Docket No. 20OCIO163 (“**Appeal**”) filed by Farmers Cooperative Telephone Company (the “**Appellant**”) and the various appeals consolidated herein in Appendix A, pursuant to and in accordance with Iowa Administrative Code rules 129—20.5(1) and (2), and following the Office of the Chief Information Officer of the State of Iowa’s (“**Office**”) notification of and opportunity for input from affected persons and parties pursuant to and in accordance with Iowa Administrative Code rule 129—20.5(3), the Office has conducted an internal review of all relevant evidence and information both submitted in connection with these Appeals and otherwise available to the Office related to the United States Census Blocks (“**Census Blocks**”) forming the basis of these Appeals. *See* Iowa Admin. Code r. 129—20.5(4).

Consistent with Iowa Administrative Code rule 129—10.5(4), the Office “shall consolidate all appeals involving the same broadband block(s) and conduct an internal review of the evidence and information submitted by all appellants related thereto, in conjunction with any other evidence and information submitted by any affected persons or parties pursuant to subrule 20.5(3), the maps and data sources identified and originally utilized in [subrule] 20.3 and [subrule] 20.4, and any other information deemed relevant by the office.”

Accordingly, due to overlaps between the various Appeal Dockets identified herein and in Appendix A, attached hereto, and the Census Blocks referenced in Appeal Docket No. 20OCIO163, the Office has consolidated these matters under this **FINAL AGENCY DECISION** (“**Decision**”). For purposes of this Decision, each of the Appeals and Appellants referenced herein and in Appendix A shall be referred to individually and collectively as the “**Appeal**” and the “**Appellant**.” Following its review of the entire record before it, the Office issues the following Decision. Iowa Admin. Code r. 129—20.5(5).

### **I. ISSUE(S) ON APPEAL.**

Whether the Office correctly determined the Census Blocks that form the basis of this Appeal constitute a Targeted Service Area (“**TSA**”) as defined by Iowa Code section 8B.1(13) and Iowa Administrative Code rule 129—20.1.

### **II. BACKGROUND, LAW, AND PROCEEDINGS.**

Iowa Code section 8B.11, as amended, creates programs the Office is responsible for or involved in administering, including a Broadband Grants Program and a Property Tax Exemption Program (Iowa Code § 427.1(40)). At a high level, these programs are designed to reduce or eliminate areas in the State that do not have access to Broadband service at minimally acceptable speed thresholds. *See* Iowa Code § 8B.11. In order to identify these unserved and underserved areas and best direct the incentives available through these programs, the Office is required to make determinations of whether any Communications Service Providers already offer or Facilitate Broadband service at or above twenty-five megabits per

second of download speed and three megabits per second of upload speed (“**25/3**”) as of July 31, 2020 (“**As of Date**”), on an individual Census Block basis by reference to Broadband availability maps or data sources that are widely accepted for accuracy and available for public review and comment. Iowa Code § 8B.10. These TSA are generally considered eligible to receive State incentives. *See* Iowa Code § 8B.10; Iowa Code § 427.1(40)). In October 2020, the Office documented and communicated its TSA determinations by publishing Version 3 (“**V3**”) of the Statewide Broadband Availability Map (“**Map**”). Iowa Admin. Code r. 129—20.3, 20.4.

On October 28, 2020, the Office published V3 of the Map. V3 of the Map is based on maps and data sources made available by the Federal Communications Commission (FCC) and/or developed or produced by contractors or third parties retained or utilized by the Office for such purpose, which contractors or third party data was offered for public comment from September 4 through September 21, 2020 to ensure such data was broadly accepted for accuracy prior to the publication of V3 of the Map. Iowa Admin. Code r. 129—20.3. Data representing the status of fixed Broadband in Iowa is as of July 31, 2020. Iowa Admin. Code r. 129—20.1, 20.3, 20.4(1); *see Broadband Availability Map - Version 3 Challenge Process* at OCIO.IOWA.GOV (<https://ocio.iowa.gov/broadband-availability-map-version-3-challenge-process>). In publishing V3 of the Map, the Office triggered a statutorily-required challenge period whereby “[w]ithin 20 days after [October 28], any person or party aggrieved or adversely affected by such determination may challenge the office’s finding by filing a notice of appeal with the office” and “provid[ing] the office with all evidence and information necessary to support the appeal.” Iowa Admin. Code r. 129—20.5(1); *see also* Iowa Code § 8B.10(2) (“The office shall establish procedures to allow challenges to the office’s finding on whether an area meets the definition of targeted service area.”). After the expiration of this initial twenty-day appeal window, the Office was to post any notices of appeal received by the Office online at [ocio.iowa.gov/broadband](https://ocio.iowa.gov/broadband). *Id.* r. 20.5(3). From the date of such posting, any other persons or parties affected by a challenge received by the Office would “have 20 calendar days to submit evidence and information in support of, or in opposition to, such appeal” to the Office. *Id.* After expiration of this second twenty-day submission window, the Office would “consolidate all appeals involving the same census block[s] and conduct an internal review of the evidence and information submitted by all appellants related thereto, in conjunction with any other evidence and information submitted by any affected persons or parties . . . , the maps and data sources originally utilized [by the office], and any other information deemed relevant by the office.” *Id.* r. 20.5(4). Thereafter, the Office would issue a final agency decision stating the reasons for the Office’s decision concerning the census block(s) in question.” *Id.* r. 20.5(5).

The period for appeals closed November 16, 2020 at 11:59 p.m. In accordance with Iowa Administrative Code rule 129—20.5(5), the Office is considering the evidence and information submitted to or otherwise available to the Office, and issuing final decisions concerning all of the Census Blocks forming the basis of appeals received by the Office.

### III. FACTUAL BACKGROUND.

On November 15, 2020, within the initial twenty-day window, Appellant filed this Appeal.<sup>1</sup> Therein, Appellant challenged the Office’s determination with respect to the following one hundred and fifty-nine (159) Census Blocks:

|                 |                 |                 |                 |                 |
|-----------------|-----------------|-----------------|-----------------|-----------------|
| 190119602001060 | 190119602002169 | 191712901001095 | 191712901002022 | 191712901003085 |
| 190119602001063 | 190119602002176 | 191712901001096 | 191712901002024 | 191712901003086 |
| 190119602001152 | 190119602002178 | 191712901001100 | 191712901002025 | 191712901003088 |
| 190119602001154 | 190119602002179 | 191712901001102 | 191712901002026 | 191712901003090 |
| 190119602001156 | 190119602002180 | 191712901001103 | 191712901002027 | 191712901003093 |
| 190119602001158 | 190119602002182 | 191712901001104 | 191712901003002 | 191712901003095 |
| 190119602001161 | 191712901001002 | 191712901001109 | 191712901003004 | 191712901003126 |
| 190119602001162 | 191712901001009 | 191712901001110 | 191712901003007 | 191712901003129 |
| 190119602001163 | 191712901001014 | 191712901001111 | 191712901003008 | 191712901003131 |
| 190119602001164 | 191712901001015 | 191712901001112 | 191712901003009 | 191712901003132 |
| 190119602001166 | 191712901001016 | 191712901001113 | 191712901003011 | 191712901003133 |
| 190119602001169 | 191712901001018 | 191712901001114 | 191712901003012 | 191712901004000 |
| 190119602001171 | 191712901001019 | 191712901001118 | 191712901003013 | 191712901004015 |
| 190119602001172 | 191712901001020 | 191712901001119 | 191712901003014 | 191712901004028 |
| 190119602002010 | 191712901001021 | 191712901001120 | 191712901003015 | 191712901004041 |
| 190119602002012 | 191712901001023 | 191712901001121 | 191712901003016 | 191712902003012 |
| 190119602002013 | 191712901001024 | 191712901001122 | 191712901003018 | 191712902003049 |
| 190119602002016 | 191712901001025 | 191712901001126 | 191712901003019 | 191712906004049 |
| 190119602002018 | 191712901001026 | 191712901001128 | 191712901003020 | 191712906004137 |
| 190119602002019 | 191712901001027 | 191712901001129 | 191712901003021 |                 |
| 190119602002020 | 191712901001029 | 191712901001131 | 191712901003025 |                 |
| 190119602002021 | 191712901001034 | 191712901001135 | 191712901003026 |                 |
| 190119602002025 | 191712901001035 | 191712901001136 | 191712901003027 |                 |
| 190119602002026 | 191712901001036 | 191712901001139 | 191712901003028 |                 |
| 190119602002029 | 191712901001038 | 191712901002000 | 191712901003030 |                 |
| 190119602002031 | 191712901001040 | 191712901002001 | 191712901003033 |                 |
| 190119602002085 | 191712901001042 | 191712901002003 | 191712901003046 |                 |
| 190119602002086 | 191712901001043 | 191712901002004 | 191712901003073 |                 |
| 190119602002088 | 191712901001044 | 191712901002011 | 191712901003074 |                 |
| 190119602002090 | 191712901001086 | 191712901002013 | 191712901003075 |                 |
| 190119602002094 | 191712901001087 | 191712901002015 | 191712901003076 |                 |
| 190119602002096 | 191712901001089 | 191712901002016 | 191712901003077 |                 |
| 190119602002097 | 191712901001090 | 191712901002019 | 191712901003079 |                 |
| 190119602002099 | 191712901001091 | 191712901002020 | 191712901003083 |                 |
| 190119602002100 | 191712901001092 | 191712901002021 | 191712901003084 |                 |

<sup>1</sup> Appendix B - Farmers Cooperative Telephone Company Appeal

Supporting its Appeal, Appellant completed and submitted a Certification.<sup>2</sup> Pursuant to this Certification, Appellant attested and certified under penalty of perjury that the Census Blocks in question are underserved in each of the one hundred and fifty-nine (159) Census Blocks forming the basis of its Appeal as of July 31, 2020. With respect to each of these one hundred and fifty-nine (159) Census Blocks, Appellant explained:

The attached 160<sup>3</sup> census blocks are underserved, capable of DSL speeds up to 10/1 and in many instances only 3/1. The latest version of the broadband availability map incorrectly shows these areas being served by speeds of 25/3 or higher. Farmers Cooperative Telephone Company (FCTC) is the only *wired* carrier providing service in these areas. As such we request these census blocks be included in the broadband availability maps TSA.

As required by Iowa Administrative Code rule 129—20.5(3), the Office posted this Appeal online on November 17, 2020, within ten calendar days of receipt, as prescribed by the above-cited rule. *See Broadband Availability Map - Version 3 Challenge Process*, at OCIO.IOWA.GOV (<https://ocio.iowa.gov/broadband-availability-map-version-3-challenge-process>). Over the course of the next twenty days, “affected persons or parties . . . submit[ted] evidence and information in support of, or in opposition to, such appeal.” Iowa Admin. Code r. 129—20.5(3). The Office subsequently conducted an internal review of all relevant evidence and information submitted by Appellant and otherwise available to the Office in connection with the Census Blocks forming the basis of this Appeal. *Id.* r. 20.5(4). Based on that review, the Office now issues the following Decision. *Id.* r. 20.5(5).

**IV. DECISION(S) AND REASONING.**

**A. DECISION REGARDING BLOCK IDs (the “IV.A Blocks”):**

|                 |                 |                 |                 |                 |
|-----------------|-----------------|-----------------|-----------------|-----------------|
| 190119602001060 | 190119602002179 | 191712901001100 | 191712901002024 | 191712901003088 |
| 190119602001063 | 190119602002180 | 191712901001102 | 191712901002025 | 191712901003090 |
| 190119602001152 | 190119602002182 | 191712901001103 | 191712901002026 | 191712901003093 |
| 190119602001154 | 191712901001002 | 191712901001104 | 191712901002027 | 191712901003095 |
| 190119602001156 | 191712901001009 | 191712901001109 | 191712901003002 | 191712901003126 |
| 190119602001158 | 191712901001014 | 191712901001110 | 191712901003004 | 191712901003129 |
| 190119602001161 | 191712901001015 | 191712901001111 | 191712901003007 | 191712901003131 |
| 190119602001162 | 191712901001016 | 191712901001112 | 191712901003008 | 191712901003132 |
| 190119602001163 | 191712901001018 | 191712901001113 | 191712901003009 | 191712901003133 |
| 190119602001164 | 191712901001019 | 191712901001114 | 191712901003012 | 191712901004000 |
| 190119602001166 | 191712901001020 | 191712901001118 | 191712901003013 | 191712901004015 |
| 190119602001169 | 191712901001021 | 191712901001119 | 191712901003014 | 191712901004028 |
| 190119602001171 | 191712901001023 | 191712901001120 | 191712901003015 | 191712901004041 |
| 190119602002012 | 191712901001024 | 191712901001121 | 191712901003016 | 191712902003012 |

<sup>2</sup> Appendix E - Farmers Cooperative Telephone Company Appeal

<sup>3</sup> Appellant included duplicate Census Blocks in their Certification. The correct number of challenged Census Blocks is as listed (159).



|                 |                 |                 |                 |                 |
|-----------------|-----------------|-----------------|-----------------|-----------------|
| 190119602002013 | 191712901001025 | 191712901001122 | 191712901003018 | 191712902003049 |
| 190119602002016 | 191712901001026 | 191712901001126 | 191712901003019 | 191712906004049 |
| 190119602002018 | 191712901001027 | 191712901001128 | 191712901003020 | 191712906004137 |
| 190119602002019 | 191712901001029 | 191712901001129 | 191712901003021 |                 |
| 190119602002020 | 191712901001034 | 191712901001131 | 191712901003025 |                 |
| 190119602002021 | 191712901001035 | 191712901001135 | 191712901003026 |                 |
| 190119602002025 | 191712901001036 | 191712901001136 | 191712901003027 |                 |
| 190119602002026 | 191712901001038 | 191712901001139 | 191712901003028 |                 |
| 190119602002029 | 191712901001040 | 191712901002000 | 191712901003030 |                 |
| 190119602002086 | 191712901001042 | 191712901002001 | 191712901003046 |                 |
| 190119602002088 | 191712901001043 | 191712901002003 | 191712901003073 |                 |
| 190119602002090 | 191712901001044 | 191712901002004 | 191712901003074 |                 |
| 190119602002094 | 191712901001086 | 191712901002011 | 191712901003075 |                 |
| 190119602002096 | 191712901001087 | 191712901002013 | 191712901003076 |                 |
| 190119602002097 | 191712901001089 | 191712901002015 | 191712901003077 |                 |
| 190119602002099 | 191712901001090 | 191712901002016 | 191712901003079 |                 |
| 190119602002100 | 191712901001091 | 191712901002019 | 191712901003083 |                 |
| 190119602002169 | 191712901001092 | 191712901002020 | 191712901003084 |                 |
| 190119602002176 | 191712901001095 | 191712901002021 | 191712901003085 |                 |
| 190119602002178 | 191712901001096 | 191712901002022 | 191712901003086 |                 |

- SUMMARY: APPEAL DENIED.** The Office will maintain the designation for the one hundred and fifty-four (154) Census Blocks identified in IV.A above as non-TSAs.
- DETAILED RESPONSE:** With respect to the one hundred and fifty-three (153) Census Blocks identified as the IV.A Blocks, above, the Office has reviewed the evidence and information submitted by Appellant related thereto, in conjunction with the maps and data sources originally utilized in determining whether these Census Blocks are or are not TSAs. Iowa Admin. Code r. 129—20.5(4).

In reviewing this evidence and information, the Office’s specific objective is to determine whether it should change its original determination of “whether a communications service provider offers or facilitates broadband service [at or above 25/3]” in the IV.A Blocks as of July 31, 2020, based on the additional evidence and information now available to it, or whether its original determination based on the “fixed broadband availability maps and corresponding data sources made available by the Federal Communications Commission (FCC)” should stand. Iowa Code §§ 8B.1(12), 8B.10(1)-(2); Iowa Admin. Code r. 129—20.1, 20.3, 20.4, 20.5.

Here, the map data representing the status of fixed Broadband in Iowa as of July 31, 2020, and originally relied on by the Office in generating V3 of the Map indicates that at least one Communication Service Provider offered or Facilitated 25/3 Broadband in each of the IV.A Blocks as of July 31, 2020. Appellant appealed the

designation of the IV.A Blocks, asserting that no Communication Service Providers in each block Facilitated 25/3 Broadband as of July 31, 2020, thereby further asserting that these Census Blocks were incorrectly labeled as non-TSAs, and that their designation should be changed to TSAs.

In considering the evidence and information provided by Appellant in support of their Appeal, the Office looks to Iowa Administrative Code rule 129—20.5(8), which provides in relevant part:

Examples of evidence and information the office would consider particularly probative of broadband service at or above the download and upload speeds specified in the definition of targeted service area as of the as of date for purposes of adjudicating an appeal of the office’s determination of whether a particular census block constitutes a targeted service area include . . . [s]igned attestations submitted to the office under penalty of perjury on forms provided by the office that the applicable census block(s) was or was not served as of the as of date with broadband service at or above the download and upload speeds specified in the definition of targeted service area.

Appellant completed and submitted a Certification on forms provided by the Office certifying under penalty of perjury that 25/3 broadband was not available in Census Blocks identified by Appellant as of July 31, 2020. The Office considers this Certification to be particularly probative.

Additionally, during the same appeal period in accordance with Iowa Administrative Code rules 129—20.5(1) and (2), the Office received a number of appeals from interested citizens (“**Citizen Appeals**”)<sup>4</sup> similarly claiming lack of service in non-TSA designated Census Blocks, which overlapped with the contested area identified by Appellant. Consistent with Iowa Administrative Code rule 129—20.4, the Office has consolidated all overlapping Citizen Appeals into this consolidated Final Agency Decision.

Following the Appeal period, Iowa Administrative Code rule 129—20.5(3) allows for input from affected persons or parties, including evidence or information received from other interested Communications Service Providers attesting to their presence or non-presence in each of the Census Blocks forming the basis of this Appeal for twenty (20) days after notification. Within that twenty-day (20) period, the Office contacted Communications Service Providers known or understood to be Facilitating 25/3 Broadband service or faster within the Census Blocks forming the basis of this Appeal. In this case, three (3) Communications Service Providers

---

<sup>4</sup> Appendix A - Consolidated Citizen Appeals

responded to the Office’s inquiry,<sup>56789</sup> each confirming, consistent with their prior statements made to the Office’s mapping contractor regarding Broadband service availability, that 25/3 Broadband was offered or Facilitated in the Census Blocks identified in their Certifications as of July 31, 2020.

The Office also notes that the Appeal states that “Farmers Cooperative Telephone Company (FCTC) is the only *wired* carrier providing service in these areas.”<sup>10</sup> The Office’s determination of service availability in any given Census Block does not hinge on the *type* of fixed Broadband offered, but rather “whether a communications service provider facilitates broadband service at or above the download or upload speeds specified in the definition of targeted service area.” Iowa Admin. Code r. 129—20.4(2). So while Certifications received from other interested Communication Service Providers affirm wireless service rather than wired, V3 of the Map does not differentiate between wired and wireless, thereby correctly reflecting the Census Blocks as served.

Where a Communication Service Provider’s Certification provided under penalty of perjury that 25/3 Broadband or faster service was offered or facilitated within a Census Block as of the As Of Date conflicts with a Citizen Appeal claiming the opposite, the Communication Service Provider’s Certification will receive the greater probative weight. Because TSA designations do not turn on whether a Communication Service Provider offers or facilitates service to *any specific* address within a Census Block as identified in a single Citizen Appeal, the Office cannot definitively assume that lack of service to any single address itself supports the designation of a Census Block as a Targeted Service Area.

## **2.A Evaluating Multiple Citizen Appeals Within The Same Block**

When the Office receives multiple Citizen Appeals that conflict with a Certification from a Communication Service Provider for one Census Block, further analysis is warranted. The quantity of Citizen Appeals may call into question whether Broadband service is Meaningfully Available in the Census Block or whether the Census Block is Materially Underserved sufficient to change the status of the block to a TSA.

Where no Communication Service Provider facilitates 25/3 Broadband to 10% or more of the geographic area of a Census Block, the Census Block is “Materially Underserved” and thus a TSA. Iowa Admin. Code r. 129—20.1. Where 25/3 Broadband is “*facilitated* to consumers on a commercially reasonable basis and without significant interruption or delay” (emphasis added), broadband service is

---

<sup>5</sup> Appendix C - LTD Broadband LLC Certification dated 12/9/2020

<sup>6</sup> Appendix D - Mediacom LLC Certification

<sup>7</sup> Appendix E - La Porte City Telephone Company Certification

<sup>8</sup> Appendix F - LTD Broadband LLC Certification dated 12/10/2020

<sup>9</sup> Appendix G - Keystone-Farmers Cooperative Telephone Company

<sup>10</sup> Appendix B - Farmer’s Cooperative Telephone Company Appeal

considered “Meaningfully Available,” and thus a TSA. Iowa Admin. Code r. 129—20.1. Here, the Office observes that the definition of “Facilitate” in Iowa Code section 8B.1(5) invokes the concept of “home, farm, school or business” in its assessment of whether Broadband service exists in any area:

“Facilitate” means a communication service provider’s ability to provide broadband service at or above the download and upload speeds specified in the definition of targeted service area in this section or section 8B.11, subsection 5, paragraph “a”, if applicable, to a *home, farm, school, or business* within a commercially reasonable time and at a commercially reasonable price upon request by a consumer. (Emphasis added.)

Given the invocation of the term “Facilitate” within the definition of “Meaningfully Available,” the Office interprets the definition of “Meaningfully Available” to permit the counting of individual homes, farms, schools, and businesses in its determination of whether 25/3 Broadband is facilitated in a Census Block, and accordingly whether that Census Block should be designated as a TSA. However, given the definition of “Materially Underserved” which establishes a threshold of “10 percent of the geographic area comprising the broadband block”, the Office further confines its interpretation of “Meaningfully Available” to this 10% threshold, meaning that if 25/3 Broadband is Facilitated to 10% or more of the homes, schools, farms, or businesses in a Census Block, it shall **not** be designated by the Office as a TSA.

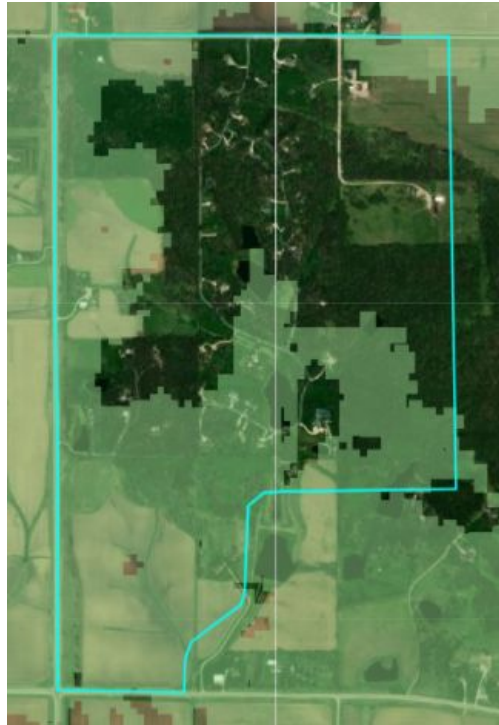
This approach was applied consistently in any case where multiple Citizen Appeals address the same Census Block. For example, the largest number of Citizen Appeals received for any single Census Block associated with this Appeal were for Census Block #191712901002003 (31 Citizen Appeals in total, as set forth in Appendix A, claimed that 25/3 Broadband was not offered or facilitated in this Census Block as of the As Of Date). However, one provider, LTD Broadband, affirmed in its Certification<sup>11</sup> that 25/3 Broadband or faster was facilitated to more than 10% of the area of this Census Block.

In considering the conflicting facts presented in connection with this Census Block, the Office turned to complimentary data sources including mapping data gathered by the Office’s third-party contractor which data sources were published for public comment in September 2020 and used as the basis for Map V3. Figure 1 identifies in light green the areas within this Census Block (which block is identified by a blue boundary line) that 25/3 Broadband service was reported to be facilitated by fixed wireless providers, such as LTD Broadband. Here the map data suggest that more than 10% of the geographic area was shown to be served with 25/3 Broadband

---

<sup>11</sup> Appendix F - LTD Broadband Certification dated 12/10/2020

or faster as of July 31, 2020, indicating the Census Block is not “Materially Underserved” as defined in Iowa Administrative Code rule 129—20.1.



*Figure 1 - 25/3 Broadband Coverage For Census Block #191712901002003*

However, the Office also considered whether 25/3 Broadband service was “Meaningfully Available” as defined in Iowa Administrative Code rule 129—20.1. In the example set forth above, for Census Block #191712901002003, demographic data, as depicted on V3 of the Map, indicates 43 households and 11 businesses exist within the Census Block for a total of 54 homes and businesses. The Office received 31 Citizen Appeals relating to 26 unique addresses within this Census Block, representing approximately 60.5% of homes (or 48.1% of all households and businesses) in the Census Block, meaning that as many as 51.9% of households (and 39.5% of all households and businesses) within the Census Block may receive service. Here again, this evidence is insufficient to demonstrate that 25/3 Broadband or faster service is facilitated to less than 10% of the Census Block. Finally, the Office again observes the map depicted in Figure 1 also suggests that 25/3 Broadband or faster is available to more than 10% of the visually identifiable structures in the Census Block, further supporting the conclusion that 25/3 Broadband is meaningfully available as measured by the count of homes, farms, schools, and businesses served.

Accordingly, in this example, the Office was unable to conclude either that the Census Block was Materially Underserved or that 25/3 Broadband was not Meaningfully Available. Thus, in this instance, the Census Block is not a TSA.

For the reasons stated above, the Office has concluded that 25/3 Broadband service was offered or facilitated in these IV.A Blocks as of July 31, 2020, and furthermore that these Census Blocks should maintain their current designation as non-TSAs. Accordingly, these IV.A Blocks are ineligible to receive State incentives under the programs administered by the Office.

**B. DECISION REGARDING BLOCK ID (the “IV.B Blocks”): 190119602001172; 190119602002010; 190119602002085.**

- 1. SUMMARY: APPEAL GRANTED.** The Office will change the designation for the three (3) Census Blocks identified in IV.B from non-TSAs to TSAs.
- 2. DETAILED RESPONSE.** Utilizing the same processes and evidence more fully described in Section IV.A(2) above, the Office received responses from notified interested Communication Service Providers asserting either that they do not facilitate 25/3 Broadband in any of the IV.B Blocks<sup>12</sup> or, that no other Communication Service Providers were identified to be present within the Census Block. Because the Office considers Appellant’s Certification to be particularly probative, combined with the verifying assertions of competing Communication Service Providers, in this instance the Office concluded that 25/3 Broadband service was not available in these IV.B Blocks as of July 31, 2020. Accordingly, these IV.B Blocks will be changed from non-TSAs to TSAs, and shall be eligible to receive State incentives under the programs administered by the Office.

**C. DECISION REGARDING BLOCK ID (the “IV.C Block”): 191712901003033.**

- 1. SUMMARY: APPEAL GRANTED.** The Office will change the designation for the Census Block listed in IV.C above from a non-TSA to a TSA.
- 2. DETAILED RESPONSE.** Utilizing the same processes and evidence more fully described in Section IV.A(2) above, the Office received a Certification during the notice window from one of several reported Communication Service Providers stating that they facilitate 25/3 Broadband in Census Block #191712901003033.<sup>13</sup> Typically, in the event of discordant Certifications, the Office is inclined to elevate the Certification of facilitated service from an incumbent Communication Service Provider in any given Census Block. However, in this instance, it is apparent that the service facilitated from the attesting Communication Service Provider is less than 10% of the geographic area of the block, and therefore meets the definition of “Materially Underserved” as set forth in Iowa Administrative Code rule 129–20. For this reason, and because no other Communication Service Providers attested to

---

<sup>12</sup> Appendix G - Keystone-Farmers Cooperative Telephone Company

<sup>13</sup> Appendix F - LTD Broadband LLC Certification dated 12/10/2020



facilitating service in this Census Block, the Office has concluded that 25/3 Broadband service was not meaningfully available as of July 31, 2020. Accordingly, the designation of Census Block #191712901003033 will be changed from a non-TSA to a TSA, and shall be eligible to receive State incentives under the programs administered by the Office.

**D. DECISION REGARDING BLOCK IDs (the “IV.D Blocks”): 190119602002031; 191712901003011.**

- 1. SUMMARY: APPEAL GRANTED.** These blocks will remain TSAs. These blocks were originally designated as TSAs in V3 of the Map.
- 2. DETAILED RESPONSE:** With respect to the IV.D Blocks, the Office has reviewed the evidence and information submitted by Appellant related thereto, in conjunction with the maps and data sources originally utilized in determining whether these Census Blocks are or are not TSAs. Iowa Admin. Code r. 129—20.5(4). In reviewing this evidence and information, the Office’s specific objective is to determine whether it should change its original determination of “whether a communications service provider offers or facilitates broadband service” at or above 25/3 in the Census Blocks forming the basis of this Appeal as of July 31, 2020, based on the additional evidence and information now available to it, or whether its original determination based on the Broadband Availability Map V3 should stand. Iowa Code §§ 8B.1(13), 8B.10(1)-(2); Iowa Admin. Code r. 129—20.1, 20.3, 20.4, 20.5. The Office agrees with Appellant that these Census Blocks should remain designated as TSAs, consistent with the Office’s original determination. The Office possesses no evidence or information supporting a conclusion that any Provider offered or Facilitated 25/3 as of July 31, 2020. Thus, the Office concludes these Census Blocks should remain TSAs.

**V. APPEALING FURTHER.**

If you wish to appeal this Decision further, within thirty (30) days of the posting of this Decision at [ocio.iowa.gov/broadband](http://ocio.iowa.gov/broadband), you must notify the Office in writing by mailing a written request for a contested case proceeding to:

Office of the Chief Information Officer  
c/o Matt Behrens  
200 E. Grand Avenue  
Des Moines, Iowa 50309

In so doing, you must state the reason(s) you are appealing this Decision, specifically identifying the particular aspects of the Decision with which you disagree and the reasons why, whether factual or legal in nature. The request for a contested case proceeding should state the name and address of the requester; identify the specific Office action which is disputed; and, where the requester is represented by a lawyer, identify the provisions of law or precedent requiring or authorizing the holding of a contested



case proceeding in the particular circumstances involved, and include a short and plain statement of the issues of material fact in dispute. Iowa Admin. Code r. 129—6.4.

Upon receipt, your appeal will be forwarded to the Department of Inspections and Appeals where an Administrative Law Judge (“ALJ”) will perform an independent review. Iowa Admin. Code r. 129—20.6(1); Iowa Admin. Code r. 129—6.6. At that time, you will have an opportunity to make a presentation, in person or over the telephone, to an ALJ regarding the nature of your concerns. If you do not exercise your appeal right within thirty (30) days of the posting of this Decision at [ocio.iowa.gov/broadband](http://ocio.iowa.gov/broadband), this Decision shall become final and no longer subject to challenge. Iowa Admin. Code r. 129—20.5(5).

Sincerely,

---

Matthew N. Behrens  
Deputy Chief Information Officer  
State of Iowa

**Appendix A - Consolidated Citizen Appeals**

| <b>Docket Number</b> | <b>Citizen Appellant Address<sup>14</sup></b> | <b>Census Block</b> | <b>Appeal Outcome</b> | <b>Final Decision Section Reference</b> |
|----------------------|---|---------------------|-----------------------|---|
| 20OCIO038            | 5555 11th Ave                                 | 190119602001156     | Denied                | IV.A                                    |
| 20OCIO039            | 5398 CR-V37                                   | 190119602001158     | Denied                | IV.A                                    |
| 20OCIO040            | 1275 56th St                                  | 190119602001152     | Denied                | IV.A                                    |
| 20OCIO041            | 5793 13th Ave                                 | 190119602001169     | Denied                | IV.A                                    |
| 20OCIO042            | 1567 58th St                                  | 190119602001172     | Granted               | IV.B                                    |
| 20OCIO043            | 5788 15th Ave                                 | 190119602001172     | Granted               | IV.B                                    |
| 20OCIO044            | 1375 59th St                                  | 190119602002012     | Denied                | IV.A                                    |
| 20OCIO045            | 1337 59th St                                  | 190119602002021     | Denied                | IV.A                                    |
| 20OCIO046            | 1396 59th St                                  | 190119602002021     | Denied                | IV.A                                    |
| 20OCIO047            | 6460 IA-21                                    | 190119602002180     | Denied                | IV.A                                    |
| 20OCIO048            | 1349 61st St                                  | 190119602002029     | Denied                | IV.A                                    |
| 20OCIO050            | 3322 230th St                                 | 191712901001119     | Denied                | IV.A                                    |
| 20OCIO051            | 6342 11th Ave                                 | 190119602002169     | Denied                | IV.A                                    |
| 20OCIO056            | 3068 160th St                                 | 191712901001016     | Denied                | IV.A                                    |
| 20OCIO057            | 1720 W Ave                                    | 191712901001020     | Denied                | IV.A                                    |
| 20OCIO058            | 1646 X Ave                                    | 191712901002024     | Denied                | IV.A                                    |
| 20OCIO059            | 2947 200th St                                 | 191712901001044     | Denied                | IV.A                                    |
| 20OCIO060            | 2772 210th St                                 | 191712901001087     | Denied                | IV.A                                    |
| 20OCIO061            | 3236 230th St                                 | 191712901001121     | Denied                | IV.A                                    |
| 20OCIO062            | 2011 T Ave                                    | 191712901001043     | Denied                | IV.A                                    |
| 20OCIO063            | 2249 CR-V18                                   | 191712901001095     | Denied                | IV.A                                    |
| 20OCIO064            | 2339 U Ave                                    | 191712901001126     | Denied                | IV.A                                    |
| 20OCIO066            | 3286 210th St                                 | 191712901001112     | Denied                | IV.A                                    |
| 20OCIO067            | 2387 X Ave                                    | 191712901001120     | Denied                | IV.A                                    |

<sup>14</sup> The Office used the address submitted by the citizen to determine the corresponding Census Block.

|           |                              |                 |        |      |
|-----------|------------------------------|-----------------|--------|------|
| 20OCIO068 | 2403 X Ave                   | 191712901001120 | Denied | IV.A |
| 20OCIO069 | 2457 X Ave                   | 191712901001120 | Denied | IV.A |
| 20OCIO070 | 3122 240th St                | 191712901001129 | Denied | IV.A |
| 20OCIO072 | 1203 Lake View Dr            | 191712901002003 | Denied | IV.A |
| 20OCIO073 | 1203 Lake View Dr            | 191712901002003 | Denied | IV.A |
| 20OCIO074 | 1193 Lakeview Dr.            | 191712901002003 | Denied | IV.A |
| 20OCIO075 | 1157 W Ave                   | 191712901002003 | Denied | IV.A |
| 20OCIO076 | 1152 W Ave                   | 191712901002003 | Denied | IV.A |
| 20OCIO077 | 1232 Lake View Dr            | 191712901002003 | Denied | IV.A |
| 20OCIO078 | 1161 Lakeview drive          | 191712901002003 | Denied | IV.A |
| 20OCIO079 | 6040 IA-21                   | 191712901002025 | Denied | IV.A |
| 20OCIO080 | 1175 Hickory Ridge Dr.       | 191712901002003 | Denied | IV.A |
| 20OCIO081 | 1228 Lake View Dr            | 191712901002003 | Denied | IV.A |
| 20OCIO082 | 1185 Hickory Ridge Dr        | 191712901002003 | Denied | IV.A |
| 20OCIO083 | 1185 Hickory Ridge,<br>Drive | 191712901002003 | Denied | IV.A |
| 20OCIO084 | 1173 Lake View Dr            | 191712901002003 | Denied | IV.A |
| 20OCIO085 | 1179 Hickory Ridge Dr        | 191712901002003 | Denied | IV.A |
| 20OCIO086 | 1219 Lake View Dr            | 191712901002003 | Denied | IV.A |
| 20OCIO087 | 1169 Lake View Dr            | 191712901002003 | Denied | IV.A |
| 20OCIO088 | 1206 Lakeview Drive          | 191712901002003 | Denied | IV.A |
| 20OCIO089 | 1231 Lakeview Dr.            | 191712901002003 | Denied | IV.A |
| 20OCIO090 | 1233 Lakeview Dr             | 191712901002003 | Denied | IV.A |
| 20OCIO091 | 1233 Lake View Dr            | 191712901002003 | Denied | IV.A |
| 20OCIO092 | 1185 Hickory Ridge Drive     | 191712901002003 | Denied | IV.A |
| 20OCIO093 | 1160 Lake View Dr            | 191712901002003 | Denied | IV.A |
| 20OCIO094 | 1195 Meadow Ln               | 191712901002003 | Denied | IV.A |
| 20OCIO095 | 1176 Hickory Ridge Dr        | 191712901002003 | Denied | IV.A |
| 20OCIO096 | 1234 Lakeview Drive          | 191712901002003 | Denied | IV.A |
| 20OCIO097 | 1191 Hickory Ridge           | 191712901002003 | Denied | IV.A |

|           |                          |                 |         |      |
|-----------|--------------------------|-----------------|---------|------|
| 20OCIO098 | 1167 Hickory Ridge Dr    | 191712901002003 | Denied  | IV.A |
| 20OCIO099 | 1178 hickory ridge Dr    | 191712901002003 | Denied  | IV.A |
| 20OCIO100 | 1171 Hickory Ridge Drive | 191712901002003 | Denied  | IV.A |
| 20OCIO101 | 3347 140th St            | 191712901002016 | Denied  | IV.A |
| 20OCIO102 | 1229 Lake View Dr        | 191712901002003 | Denied  | IV.A |
| 20OCIO104 | 2542 CR-V18              | 191712901003007 | Denied  | IV.A |
| 20OCIO105 | 313 3rd St               | 191712901003126 | Denied  | IV.A |
| 20OCIO106 | 506 Main St              | 191712901003013 | Denied  | IV.A |
| 20OCIO107 | 314 3rd St               | 191712901003018 | Denied  | IV.A |
| 20OCIO108 | 212 2nd St               | 191712901003008 | Denied  | IV.A |
| 20OCIO109 | 407 Main St              | 191712901003019 | Denied  | IV.A |
| 20OCIO110 | 219 2nd St               | 191712901003008 | Denied  | IV.A |
| 20OCIO111 | 404 Main St              | 191712901003016 | Denied  | IV.A |
| 20OCIO112 | 507 5th St               | 191712901003016 | Denied  | IV.A |
| 20OCIO113 | 506 5th St               | 191712901003015 | Denied  | IV.A |
| 20OCIO114 | 2474 S Ave               | 191712901003025 | Denied  | IV.A |
| 20OCIO115 | 2647 260th St            | 191712901003046 | Denied  | IV.A |
| 20OCIO116 | 2471 O Ave               | 191712901003028 | Denied  | IV.A |
| 20OCIO117 | 2609 P Ave               | 191712901003030 | Denied  | IV.A |
| 20OCIO118 | 1156 Lake View Dr        | 191712901002003 | Denied  | IV.A |
| 20OCIO119 | 2491 P Ave               | 191712901003028 | Denied  | IV.A |
| 20OCIO120 | 2473 245th St            | 191712901003033 | Granted | IV.C |
| 20OCIO121 | 2769 250th St            | 191712901003025 | Denied  | IV.A |
| 20OCIO122 | 2663 V Ave               | 191712901003090 | Denied  | IV.A |
| 20OCIO123 | 3010 280th St            | 191712906004137 | Denied  | IV.A |
| 20OCIO125 | 511 Main St              | 191712901003015 | Denied  | IV.A |
| 20OCIO127 | 1375 60th St             | 190119602002029 | Denied  | IV.A |
| 20OCIO161 | 3155 120th st            | 191712901002003 | Denied  | IV.A |

## Appendix B - Farmers Cooperative Telephone Company Appeal



**STATE OF IOWA**

KIM REYNOLDS, GOVERNOR  
ADAM GREGG, LT. GOVERNOR

ANNETTE DUNN  
CHIEF INFORMATION OFFICER

**Affirmation, Attestation, and Certification of Service or Lack of Service in Census Blocks  
Broadband Grants Program Broadband Availability Map Challenge Process**

|   |  |         |  |
|---|--|---------|--|
| <b>A. COMPANY INFORMATION (if submitted on behalf of an entity)</b> |  |         |  |
| Company Name:   | Farmers Cooperative Telephone Company (FCTC) |         |  |
| Address:  | 332 Main Street                              |         |  |
| City:   | Dysart                                       | State:  | IA Zip: 52224  |
| <b>B. DESIGNATED CONTACT INFORMATION</b>                            |  |         |  |
| Contact Name  | Shelly Franzenburg                           | Phone # | 319-476-7800 Email: <a href="mailto:sfranzenburg@fctc.co">sfranzenburg@fctc.co</a> |
| <u>op</u>   |  |         |  |
| <b>C. CERTIFICATION/ATTESTATION/AFFIRMATION</b>                     |  |         |  |

In signing and submitting this form, the above-identified company, and its duly authorized representative signing on behalf thereof, hereby affirms, attests, and certifies under penalty of perjury that, as represented in its submission:

1. Company, consistent with the representations made in this form, and regardless of whether your company's prior reporting to the FCC and/or Connected Nation was correct or in error, either:
  - a. Offered or Facilitated material Broadband service at or above twenty-five (25) megabits per second of download speed and three (3) megabits per second of upload speed ("**25/3 Broadband**") in the identified census blocks as of July 31, 2020; or
  - b. Did **NOT** offer or Facilitate 25/3 Broadband in the identified census blocks as of July 31, 2020;

**OR**

2. Another unaffiliated company, consistent with the representations made in this form, either:
  - a. Offered or Facilitated material Broadband service at or above twenty-five (25) megabits per second of download speed and three (3) megabits per second of upload speed ("**25/3 Broadband**") in the identified census blocks as of July 31, 2020; or
  - b. Did **NOT** offer or Facilitate 25/3 Broadband in the identified census blocks as of July 31, 2020;

|  |
|--|
| <p><b>Choose One</b></p> <p><input checked="" type="checkbox"/> Response Concerns Your Company or An Affiliated Company (#1 above)</p> <p><b>OR</b></p> <p><input type="checkbox"/> Response Concerns An Unaffiliated Company (#2 above)</p> |
|--|

200 E. GRAND AVE, DES MOINES, IOWA 50309

515.281.5503

[CIO@IOWA.GOV](mailto:CIO@IOWA.GOV)



| CENSUS BLOCK ID IN WHICH 25/3 BROADBAND OFFERED OR FACILITATED (OR NOT)<br>(please attach excel spreadsheet listing additional census blocks and making corresponding representations in columns to the right if necessary) | PRIOR REPORTING to FCC or Connected Nation   |                                  |                                      |   | 25/3 Broadband materially FACILITATED AS OF July 31, 2020   |
|---|--|----------------------------------|--------------------------------------|---|---|
|   | <u>In Error</u> means data was reported incorrectly to FCC or Connected Nation<br><u>Correct</u> means data was reported correctly to FCC or Connected Nation<br><u>No Response</u> means data was not reported to FCC or Connected Nation<br><u>Unknown</u> means data is incorrect for unknown reasons |                                  |                                      |   | <u>Yes</u> means 25/3 broadband was available as of July 31, 2020<br><u>No</u> means 25/3 broadband was not available as of July 31, 2020 |
| See Attached  | <input type="checkbox"/> In Error  | <input type="checkbox"/> Correct | <input type="checkbox"/> No Response | <input checked="" type="checkbox"/> Unknown | <input type="checkbox"/> Yes <input checked="" type="checkbox"/> No   |
|   | <input type="checkbox"/> In Error  | <input type="checkbox"/> Correct | <input type="checkbox"/> No Response | <input type="checkbox"/> Unknown            | <input type="checkbox"/> Yes <input type="checkbox"/> No  |
|   | <input type="checkbox"/> In Error  | <input type="checkbox"/> Correct | <input type="checkbox"/> No Response | <input type="checkbox"/> Unknown            | <input type="checkbox"/> Yes <input type="checkbox"/> No  |
|   | <input type="checkbox"/> In Error  | <input type="checkbox"/> Correct | <input type="checkbox"/> No Response | <input type="checkbox"/> Unknown            | <input type="checkbox"/> Yes <input type="checkbox"/> No  |
|   | <input type="checkbox"/> In Error  | <input type="checkbox"/> Correct | <input type="checkbox"/> No Response | <input type="checkbox"/> Unknown            | <input type="checkbox"/> Yes <input type="checkbox"/> No  |
|   | <input type="checkbox"/> In Error  | <input type="checkbox"/> Correct | <input type="checkbox"/> No Response | <input type="checkbox"/> Unknown            | <input type="checkbox"/> Yes <input type="checkbox"/> No  |

**D. ADDITIONAL EXPLANATION** (To the extent you believe additional explanation is required to ensure that you are communicating full and accurate information, please use the below space to further explain, qualify, or substantiate your above certification/attestation/affirmation. To the extent necessary, please feel free to upload additional explanations/supporting documentation. If you are a Communications Service Provider and indicated "In Error" or "No Response" in the "Prior Reporting to FCC" column for any census blocks above, please elaborate.)

The attached 160 census blocks are underserved, capable of DSL speeds up to 10/1 and in many instances only 3/1. The latest version of the broadband availability map incorrectly shows these areas being served by speeds of 25/3 or higher. Farmers Cooperative Telephone Company (FCTC) is the only wired carrier providing service in these areas. As such we request these census blocks be included in the broadband availability maps TSA.

**E. SIGNATURE\***

Authorized Signature: Shelly Franzenburg Date: 11/15/2020

Printed Name: SHHELLY FRANZENBURG

Title: GIM

**\*PLEASE READ BEFORE SIGNING:** By signing and submitting this form, I, on my own behalf or as a representative of the company identified above, as applicable, expressly represent that I am authorized to make the above factual representation on behalf of said company and/or myself, as applicable, and under penalty of perjury as authorized by Iowa Code section 622.1 and pursuant to the laws of the state of Iowa, certify the following with respect to this form submitted on behalf of said company and/or myself: any statements, representations, warranties, certifications, or attestations made in this form, including any attachments or enclosures associated therewith, are true and accurate; I, on behalf of said company and/or myself, have not knowingly made any false statements or representations in this form. In addition to any criminal penalties authorized by Iowa Code section 720.2 that may result from any false statements of material fact made herein or any other remedies available at law, equity, or otherwise, if it is subsequently determined that I have made a statement, representation, warranty, certification, or attestation in this form, or any attachments or enclosures associated herewith, that is later proven untrue in any material respect, the company on which I submitted this form on behalf of may be disqualified from current incentive programs administered by the Office or may be ordered to repay the Office the entire amount of any funds previously distributed by the Office to said company in connection with any current incentive programs administered by the Office. OCIO makes no guarantees as to whether the information supplied by you will result in any change to the Broadband Availability Map V3 or the way any incentive decisions are reviewed, scored, or decided. This form, as completed, any attachments hereto, and any other information or materials submitted to the Office in connection with this form or related inquiry, shall be considered public records and shall be made available for public examination and/or disseminated upon request by third parties as required by Iowa Code chapter 22. The Office reserves the right to reject this form and relatedly consider any information communicated through this form as neither credible nor probative if this form is not fully and properly filled out.



| <b>CENSUS BLOCK ID IN WHICH 25/3 BROADBAND OFFERED OR FACILITATED (OR NOT)</b><br><small>(please attach excel spreadsheet listing additional census blocks and making corresponding representations in columns to the right if necessary)</small> | <b>PRIOR REPORTING to FCC or Connected Nation</b><br><u>In Error</u> means data was reported incorrectly to FCC or Connected Nation<br><u>Correct</u> means data was reported correctly to FCC or Connected Nation<br><u>No Response</u> means data was not reported to FCC or Connected Nation<br><u>Unknown</u> means data is incorrect for unknown reasons | <b>25/3 Broadband materially FACILITATED AS OF July 31, 2020</b><br><u>Yes</u> means 25/3 broadband was available as of July 31, 2020<br><u>No</u> means 25/3 broadband was not available as of July 31, 2020 |
|---|---|---|
| 190119602001060   | <input type="checkbox"/> In Error <input type="checkbox"/> Correct <input type="checkbox"/> No Response <input checked="" type="checkbox"/> Unknown   | <input type="checkbox"/> Yes <input checked="" type="checkbox"/> No   |
| 190119602001063   | <input type="checkbox"/> In Error <input type="checkbox"/> Correct <input type="checkbox"/> No Response <input checked="" type="checkbox"/> Unknown   | <input type="checkbox"/> Yes <input checked="" type="checkbox"/> No   |
| 190119602001152   | <input type="checkbox"/> In Error <input type="checkbox"/> Correct <input type="checkbox"/> No Response <input checked="" type="checkbox"/> Unknown   | <input type="checkbox"/> Yes <input checked="" type="checkbox"/> No   |
| 190119602001154   | <input type="checkbox"/> In Error <input type="checkbox"/> Correct <input type="checkbox"/> No Response <input checked="" type="checkbox"/> Unknown   | <input type="checkbox"/> Yes <input checked="" type="checkbox"/> No   |
| 190119602001156   | <input type="checkbox"/> In Error <input type="checkbox"/> Correct <input type="checkbox"/> No Response <input checked="" type="checkbox"/> Unknown   | <input type="checkbox"/> Yes <input checked="" type="checkbox"/> No   |
| 190119602001158   | <input type="checkbox"/> In Error <input type="checkbox"/> Correct <input type="checkbox"/> No Response <input checked="" type="checkbox"/> Unknown   | <input type="checkbox"/> Yes <input checked="" type="checkbox"/> No   |
| 190119602001161   | <input type="checkbox"/> In Error <input type="checkbox"/> Correct <input type="checkbox"/> No Response <input checked="" type="checkbox"/> Unknown   | <input type="checkbox"/> Yes <input checked="" type="checkbox"/> No   |
| 190119602001162   | <input type="checkbox"/> In Error <input type="checkbox"/> Correct <input type="checkbox"/> No Response <input checked="" type="checkbox"/> Unknown   | <input type="checkbox"/> Yes <input checked="" type="checkbox"/> No   |
| 190119602001163   | <input type="checkbox"/> In Error <input type="checkbox"/> Correct <input type="checkbox"/> No Response <input checked="" type="checkbox"/> Unknown   | <input type="checkbox"/> Yes <input checked="" type="checkbox"/> No   |
| 190119602001164   | <input type="checkbox"/> In Error <input type="checkbox"/> Correct <input type="checkbox"/> No Response <input checked="" type="checkbox"/> Unknown   | <input type="checkbox"/> Yes <input checked="" type="checkbox"/> No   |
| 190119602001166   | <input type="checkbox"/> In Error <input type="checkbox"/> Correct <input type="checkbox"/> No Response <input checked="" type="checkbox"/> Unknown   | <input type="checkbox"/> Yes <input checked="" type="checkbox"/> No   |
| 190119602001169   | <input type="checkbox"/> In Error <input type="checkbox"/> Correct <input type="checkbox"/> No Response <input checked="" type="checkbox"/> Unknown   | <input type="checkbox"/> Yes <input checked="" type="checkbox"/> No   |
| 190119602001171   | <input type="checkbox"/> In Error <input type="checkbox"/> Correct <input type="checkbox"/> No Response <input checked="" type="checkbox"/> Unknown   | <input type="checkbox"/> Yes <input checked="" type="checkbox"/> No   |
| 190119602001172   | <input type="checkbox"/> In Error <input type="checkbox"/> Correct <input type="checkbox"/> No Response <input checked="" type="checkbox"/> Unknown   | <input type="checkbox"/> Yes <input checked="" type="checkbox"/> No   |
| 190119602002010   | <input type="checkbox"/> In Error <input type="checkbox"/> Correct <input type="checkbox"/> No Response <input checked="" type="checkbox"/> Unknown   | <input type="checkbox"/> Yes <input checked="" type="checkbox"/> No   |
| 190119602002012   | <input type="checkbox"/> In Error <input type="checkbox"/> Correct <input type="checkbox"/> No Response <input checked="" type="checkbox"/> Unknown   | <input type="checkbox"/> Yes <input checked="" type="checkbox"/> No   |
| 190119602002013   | <input type="checkbox"/> In Error <input type="checkbox"/> Correct <input type="checkbox"/> No Response <input checked="" type="checkbox"/> Unknown   | <input type="checkbox"/> Yes <input checked="" type="checkbox"/> No   |
| 190119602002016   | <input type="checkbox"/> In Error <input type="checkbox"/> Correct <input type="checkbox"/> No Response <input checked="" type="checkbox"/> Unknown   | <input type="checkbox"/> Yes <input checked="" type="checkbox"/> No   |
| 190119602002018   | <input type="checkbox"/> In Error <input type="checkbox"/> Correct <input type="checkbox"/> No Response <input checked="" type="checkbox"/> Unknown   | <input type="checkbox"/> Yes <input checked="" type="checkbox"/> No   |
| 190119602002019   | <input type="checkbox"/> In Error <input type="checkbox"/> Correct <input type="checkbox"/> No Response <input checked="" type="checkbox"/> Unknown   | <input type="checkbox"/> Yes <input checked="" type="checkbox"/> No   |
| 190119602002020   | <input type="checkbox"/> In Error <input type="checkbox"/> Correct <input type="checkbox"/> No Response <input checked="" type="checkbox"/> Unknown   | <input type="checkbox"/> Yes <input checked="" type="checkbox"/> No   |
| 190119602002021   | <input type="checkbox"/> In Error <input type="checkbox"/> Correct <input type="checkbox"/> No Response <input checked="" type="checkbox"/> Unknown   | <input type="checkbox"/> Yes <input checked="" type="checkbox"/> No   |
| 190119602002025   | <input type="checkbox"/> In Error <input type="checkbox"/> Correct <input type="checkbox"/> No Response <input checked="" type="checkbox"/> Unknown   | <input type="checkbox"/> Yes <input checked="" type="checkbox"/> No   |
| 190119602002026   | <input type="checkbox"/> In Error <input type="checkbox"/> Correct <input type="checkbox"/> No Response <input checked="" type="checkbox"/> Unknown   | <input type="checkbox"/> Yes <input checked="" type="checkbox"/> No   |
| 190119602002029   | <input type="checkbox"/> In Error <input type="checkbox"/> Correct <input type="checkbox"/> No Response <input checked="" type="checkbox"/> Unknown   | <input type="checkbox"/> Yes <input checked="" type="checkbox"/> No   |
| 190119602002031   | <input type="checkbox"/> In Error <input type="checkbox"/> Correct <input type="checkbox"/> No Response <input checked="" type="checkbox"/> Unknown   | <input type="checkbox"/> Yes <input checked="" type="checkbox"/> No   |
| 190119602002085   | <input type="checkbox"/> In Error <input type="checkbox"/> Correct <input type="checkbox"/> No Response <input checked="" type="checkbox"/> Unknown   | <input type="checkbox"/> Yes <input checked="" type="checkbox"/> No   |
| 190119602002086   | <input type="checkbox"/> In Error <input type="checkbox"/> Correct <input type="checkbox"/> No Response <input checked="" type="checkbox"/> Unknown   | <input type="checkbox"/> Yes <input checked="" type="checkbox"/> No   |
| 190119602002088   | <input type="checkbox"/> In Error <input type="checkbox"/> Correct <input type="checkbox"/> No Response <input checked="" type="checkbox"/> Unknown   | <input type="checkbox"/> Yes <input checked="" type="checkbox"/> No   |
| 190119602002090   | <input type="checkbox"/> In Error <input type="checkbox"/> Correct <input type="checkbox"/> No Response <input checked="" type="checkbox"/> Unknown   | <input type="checkbox"/> Yes <input checked="" type="checkbox"/> No   |
| 190119602002094   | <input type="checkbox"/> In Error <input type="checkbox"/> Correct <input type="checkbox"/> No Response <input checked="" type="checkbox"/> Unknown   | <input type="checkbox"/> Yes <input checked="" type="checkbox"/> No   |
| 190119602002096   | <input type="checkbox"/> In Error <input type="checkbox"/> Correct <input type="checkbox"/> No Response <input checked="" type="checkbox"/> Unknown   | <input type="checkbox"/> Yes <input checked="" type="checkbox"/> No   |
| 190119602002097   | <input type="checkbox"/> In Error <input type="checkbox"/> Correct <input type="checkbox"/> No Response <input checked="" type="checkbox"/> Unknown   | <input type="checkbox"/> Yes <input checked="" type="checkbox"/> No   |
| 190119602002099   | <input type="checkbox"/> In Error <input type="checkbox"/> Correct <input type="checkbox"/> No Response <input checked="" type="checkbox"/> Unknown   | <input type="checkbox"/> Yes <input checked="" type="checkbox"/> No   |
| 190119602002100   | <input type="checkbox"/> In Error <input type="checkbox"/> Correct <input type="checkbox"/> No Response <input checked="" type="checkbox"/> Unknown   | <input type="checkbox"/> Yes <input checked="" type="checkbox"/> No   |
| 190119602002169   | <input type="checkbox"/> In Error <input type="checkbox"/> Correct <input type="checkbox"/> No Response <input checked="" type="checkbox"/> Unknown   | <input type="checkbox"/> Yes <input checked="" type="checkbox"/> No   |
| 190119602002176   | <input type="checkbox"/> In Error <input type="checkbox"/> Correct <input type="checkbox"/> No Response <input checked="" type="checkbox"/> Unknown   | <input type="checkbox"/> Yes <input checked="" type="checkbox"/> No   |
| 190119602002178   | <input type="checkbox"/> In Error <input type="checkbox"/> Correct <input type="checkbox"/> No Response <input checked="" type="checkbox"/> Unknown   | <input type="checkbox"/> Yes <input checked="" type="checkbox"/> No   |
| 190119602002179   | <input type="checkbox"/> In Error <input type="checkbox"/> Correct <input type="checkbox"/> No Response <input checked="" type="checkbox"/> Unknown   | <input type="checkbox"/> Yes <input checked="" type="checkbox"/> No   |
| 190119602002180   | <input type="checkbox"/> In Error <input type="checkbox"/> Correct <input type="checkbox"/> No Response <input checked="" type="checkbox"/> Unknown   | <input type="checkbox"/> Yes <input checked="" type="checkbox"/> No   |
| 190119602002182   | <input type="checkbox"/> In Error <input type="checkbox"/> Correct <input type="checkbox"/> No Response <input checked="" type="checkbox"/> Unknown   | <input type="checkbox"/> Yes <input checked="" type="checkbox"/> No   |
| 191712901001002   | <input type="checkbox"/> In Error <input type="checkbox"/> Correct <input type="checkbox"/> No Response <input checked="" type="checkbox"/> Unknown   | <input type="checkbox"/> Yes <input checked="" type="checkbox"/> No   |









# Appendix C - LTD Broadband Certification dated 12/9/2020

## EXHIBIT B

### Affirmation, Attestation, and Certification of Service or lack of Service in Census Blocks Broadband Grants Program Broadband Availability Map Challenge Process

| A. COMPANY INFORMATION (if submitted on behalf of an entity) |                  |                |  |
|--|------------------|----------------|--|
| <b>Company Name:</b>   | LTD Broadband    |                |  |
| <b>Address:</b>  | P O Box 3064     |                |  |
| <b>City:</b>   | Blooming Prairie | <b>State:</b>  | MN <b>Zip:</b> 55917   |
| B. DESIGNATED CONTACT INFORMATION                            |                  |                |  |
| <b>Contact Name</b>  | Rebecca Shields  | <b>Phone #</b> | (507) 410 - 0446 <b>Email:</b> rebeccashields@ltdbroadband.com |
| C. CERTIFICATION/ATTESTATION/AFFIRMATION                     |                  |                |  |

In signing and submitting this form, the above-identified company, and its duly authorized representative signing on behalf thereof, hereby affirms, attests, and certifies under penalty of perjury that, as represented in its submission:

1. Company, consistent with the representations made in this form, and regardless of whether your company's prior reporting to the FCC or State of Iowa was correct or in error, either:
  - a. Facilitated material Broadband service at or above twenty-five (25) megabits per second of download speed and three (3) megabits per second of upload speed ("**25/3 Broadband**") in the identified census blocks as of July 31, 2020; or
  - b. Did **NOT** offer or Facilitate 25/3 Broadband in the identified census blocks as of July 31, 2020;

| CENSUS BLOCK ID IN WHICH 25/3 BROADBAND OFFERED OR FACILITATED | 25/3 Broadband materially FACILITATED AS OF July 31, 2020<br><br><small>Yes means 25/3 broadband was offered or facilitated as of July 31, 2020<br/>No means 25/3 broadband was not offered or facilitated as of July 31, 2020</small> |
|--|--|
| 190119602001060  | <input checked="" type="checkbox"/> Yes [ ] No   |
| 190119602001063  | <input checked="" type="checkbox"/> Yes [ ] No   |
| 190119602001154  | <input checked="" type="checkbox"/> Yes [ ] No   |
| 190119602001161  | <input checked="" type="checkbox"/> Yes [ ] No   |
| 190119602001162  | <input checked="" type="checkbox"/> Yes [ ] No   |
| 190119602001163  | <input checked="" type="checkbox"/> Yes [ ] No   |
| 190119602001164  | <input checked="" type="checkbox"/> Yes [ ] No   |

200 EAST GRAND AVE, DES MOINES, IOWA 50309

515.281.5503  
[CIO@IOWA.GOV](mailto:CIO@IOWA.GOV)

|                 |   |
|-----------------|---|
| 190119602001166 | <input checked="" type="checkbox"/> Yes <input type="checkbox"/> No |
| 190119602001171 | <input checked="" type="checkbox"/> Yes <input type="checkbox"/> No |
| 190119602002013 | <input checked="" type="checkbox"/> Yes <input type="checkbox"/> No |
| 190119602002016 | <input checked="" type="checkbox"/> Yes <input type="checkbox"/> No |
| 190119602002018 | <input checked="" type="checkbox"/> Yes <input type="checkbox"/> No |
| 190119602002019 | <input checked="" type="checkbox"/> Yes <input type="checkbox"/> No |
| 190119602002020 | <input checked="" type="checkbox"/> Yes <input type="checkbox"/> No |
| 190119602002026 | <input checked="" type="checkbox"/> Yes <input type="checkbox"/> No |
| 190119602002086 | <input checked="" type="checkbox"/> Yes <input type="checkbox"/> No |
| 190119602002088 | <input checked="" type="checkbox"/> Yes <input type="checkbox"/> No |
| 190119602002090 | <input checked="" type="checkbox"/> Yes <input type="checkbox"/> No |
| 190119602002094 | <input checked="" type="checkbox"/> Yes <input type="checkbox"/> No |
| 190119602002096 | <input checked="" type="checkbox"/> Yes <input type="checkbox"/> No |
| 190119602002097 | <input checked="" type="checkbox"/> Yes <input type="checkbox"/> No |
| 190119602002099 | <input checked="" type="checkbox"/> Yes <input type="checkbox"/> No |
| 190119602002100 | <input checked="" type="checkbox"/> Yes <input type="checkbox"/> No |
| 190119602002176 | <input checked="" type="checkbox"/> Yes <input type="checkbox"/> No |
| 190119602002178 | <input checked="" type="checkbox"/> Yes <input type="checkbox"/> No |
| 190119602002179 | <input checked="" type="checkbox"/> Yes <input type="checkbox"/> No |
| 190119602002182 | <input checked="" type="checkbox"/> Yes <input type="checkbox"/> No |
| 191712901001002 | <input checked="" type="checkbox"/> Yes <input type="checkbox"/> No |
| 191712901001009 | <input checked="" type="checkbox"/> Yes <input type="checkbox"/> No |
| 191712901001014 | <input checked="" type="checkbox"/> Yes <input type="checkbox"/> No |
| 191712901001015 | <input checked="" type="checkbox"/> Yes <input type="checkbox"/> No |
| 191712901001016 | <input checked="" type="checkbox"/> Yes <input type="checkbox"/> No |
| 191712901001018 | <input checked="" type="checkbox"/> Yes <input type="checkbox"/> No |
| 191712901001019 | <input checked="" type="checkbox"/> Yes <input type="checkbox"/> No |
| 191712901001021 | <input checked="" type="checkbox"/> Yes <input type="checkbox"/> No |



|                 |   |
|-----------------|---|
| 191712901001023 | <input checked="" type="checkbox"/> Yes <input type="checkbox"/> No |
| 191712901001024 | <input checked="" type="checkbox"/> Yes <input type="checkbox"/> No |
| 191712901001025 | <input checked="" type="checkbox"/> Yes <input type="checkbox"/> No |
| 191712901001026 | <input checked="" type="checkbox"/> Yes <input type="checkbox"/> No |
| 191712901001027 | <input checked="" type="checkbox"/> Yes <input type="checkbox"/> No |
| 191712901001029 | <input checked="" type="checkbox"/> Yes <input type="checkbox"/> No |
| 191712901001034 | <input checked="" type="checkbox"/> Yes <input type="checkbox"/> No |
| 191712901001035 | <input checked="" type="checkbox"/> Yes <input type="checkbox"/> No |
| 191712901001036 | <input checked="" type="checkbox"/> Yes <input type="checkbox"/> No |
| 191712901001038 | <input checked="" type="checkbox"/> Yes <input type="checkbox"/> No |
| 191712901001040 | <input checked="" type="checkbox"/> Yes <input type="checkbox"/> No |
| 191712901001042 | <input checked="" type="checkbox"/> Yes <input type="checkbox"/> No |
| 191712901001086 | <input checked="" type="checkbox"/> Yes <input type="checkbox"/> No |
| 191712901001089 | <input checked="" type="checkbox"/> Yes <input type="checkbox"/> No |
| 191712901001090 | <input checked="" type="checkbox"/> Yes <input type="checkbox"/> No |
| 191712901001091 | <input checked="" type="checkbox"/> Yes <input type="checkbox"/> No |
| 191712901001092 | <input checked="" type="checkbox"/> Yes <input type="checkbox"/> No |
| 191712901001096 | <input checked="" type="checkbox"/> Yes <input type="checkbox"/> No |
| 191712901001100 | <input checked="" type="checkbox"/> Yes <input type="checkbox"/> No |
| 191712901001102 | <input checked="" type="checkbox"/> Yes <input type="checkbox"/> No |
| 191712901001103 | <input checked="" type="checkbox"/> Yes <input type="checkbox"/> No |
| 191712901001104 | <input checked="" type="checkbox"/> Yes <input type="checkbox"/> No |
| 191712901001109 | <input checked="" type="checkbox"/> Yes <input type="checkbox"/> No |
| 191712901001110 | <input checked="" type="checkbox"/> Yes <input type="checkbox"/> No |
| 191712901001111 | <input checked="" type="checkbox"/> Yes <input type="checkbox"/> No |
| 191712901001113 | <input checked="" type="checkbox"/> Yes <input type="checkbox"/> No |
| 191712901001114 | <input checked="" type="checkbox"/> Yes <input type="checkbox"/> No |
| 191712901001118 | <input checked="" type="checkbox"/> Yes <input type="checkbox"/> No |

|                 |   |
|-----------------|---|
| 191712901001122 | <input checked="" type="checkbox"/> Yes <input type="checkbox"/> No |
| 191712901001128 | <input checked="" type="checkbox"/> Yes <input type="checkbox"/> No |
| 191712901001131 | <input checked="" type="checkbox"/> Yes <input type="checkbox"/> No |
| 191712901001135 | <input checked="" type="checkbox"/> Yes <input type="checkbox"/> No |
| 191712901001136 | <input checked="" type="checkbox"/> Yes <input type="checkbox"/> No |
| 191712901001139 | <input checked="" type="checkbox"/> Yes <input type="checkbox"/> No |
| 191712901002000 | <input checked="" type="checkbox"/> Yes <input type="checkbox"/> No |
| 191712901002001 | <input checked="" type="checkbox"/> Yes <input type="checkbox"/> No |
| 191712901002004 | <input checked="" type="checkbox"/> Yes <input type="checkbox"/> No |
| 191712901002011 | <input checked="" type="checkbox"/> Yes <input type="checkbox"/> No |
| 191712901002013 | <input checked="" type="checkbox"/> Yes <input type="checkbox"/> No |
| 191712901002015 | <input checked="" type="checkbox"/> Yes <input type="checkbox"/> No |
| 191712901002019 | <input checked="" type="checkbox"/> Yes <input type="checkbox"/> No |
| 191712901002020 | <input checked="" type="checkbox"/> Yes <input type="checkbox"/> No |
| 191712901002021 | <input checked="" type="checkbox"/> Yes <input type="checkbox"/> No |
| 191712901002022 | <input checked="" type="checkbox"/> Yes <input type="checkbox"/> No |
| 191712901002025 | <input checked="" type="checkbox"/> Yes <input type="checkbox"/> No |
| 191712901002026 | <input checked="" type="checkbox"/> Yes <input type="checkbox"/> No |
| 191712901002027 | <input checked="" type="checkbox"/> Yes <input type="checkbox"/> No |
| 191712901003002 | <input checked="" type="checkbox"/> Yes <input type="checkbox"/> No |
| 191712901003004 | <input checked="" type="checkbox"/> Yes <input type="checkbox"/> No |
| 191712901003009 | <input checked="" type="checkbox"/> Yes <input type="checkbox"/> No |
| 191712901003011 | <input checked="" type="checkbox"/> Yes <input type="checkbox"/> No |
| 191712901003012 | <input checked="" type="checkbox"/> Yes <input type="checkbox"/> No |
| 191712901003014 | <input checked="" type="checkbox"/> Yes <input type="checkbox"/> No |
| 191712901003021 | <input checked="" type="checkbox"/> Yes <input type="checkbox"/> No |
| 191712901003026 | <input checked="" type="checkbox"/> Yes <input type="checkbox"/> No |
| 191712901003027 | <input checked="" type="checkbox"/> Yes <input type="checkbox"/> No |

|                 |   |
|-----------------|---|
| 191712901003073 | <input checked="" type="checkbox"/> Yes <input type="checkbox"/> No |
| 191712901003074 | <input checked="" type="checkbox"/> Yes <input type="checkbox"/> No |
| 191712901003075 | <input checked="" type="checkbox"/> Yes <input type="checkbox"/> No |
| 191712901003076 | <input checked="" type="checkbox"/> Yes <input type="checkbox"/> No |
| 191712901003077 | <input checked="" type="checkbox"/> Yes <input type="checkbox"/> No |
| 191712901003079 | <input checked="" type="checkbox"/> Yes <input type="checkbox"/> No |
| 191712901003083 | <input checked="" type="checkbox"/> Yes <input type="checkbox"/> No |
| 191712901003084 | <input checked="" type="checkbox"/> Yes <input type="checkbox"/> No |
| 191712901003085 | <input checked="" type="checkbox"/> Yes <input type="checkbox"/> No |
| 191712901003086 | <input checked="" type="checkbox"/> Yes <input type="checkbox"/> No |
| 191712901003088 | <input checked="" type="checkbox"/> Yes <input type="checkbox"/> No |
| 191712901003093 | <input checked="" type="checkbox"/> Yes <input type="checkbox"/> No |
| 191712901003095 | <input checked="" type="checkbox"/> Yes <input type="checkbox"/> No |
| 191712901003131 | <input checked="" type="checkbox"/> Yes <input type="checkbox"/> No |
| 191712901003132 | <input checked="" type="checkbox"/> Yes <input type="checkbox"/> No |
| 191712901003133 | <input checked="" type="checkbox"/> Yes <input type="checkbox"/> No |
| 191712901004000 | <input checked="" type="checkbox"/> Yes <input type="checkbox"/> No |
| 191712901004015 | <input checked="" type="checkbox"/> Yes <input type="checkbox"/> No |
| 191712901004028 | <input checked="" type="checkbox"/> Yes <input type="checkbox"/> No |
| 191712901004041 | <input checked="" type="checkbox"/> Yes <input type="checkbox"/> No |
| 191712906004049 | <input checked="" type="checkbox"/> Yes <input type="checkbox"/> No |

**D. ADDITIONAL EXPLANATION** (To the extent you believe additional explanation is required to ensure that you are communicating full and accurate information, please use the below space to further explain, qualify, or substantiate your above certification/attestation/affirmation. To the extent necessary, please feel free to upload additional explanations/supporting documentation.)



|  |
|--|
|  |
|--|

|  |                       |  |
|--|-----------------------|--|
| <b>E. SIGNATURE*</b>                         |                       |  |
| <b>Authorized Signature:</b> Rebecca Shields | <b>Date:</b> 12/09/20 |  |
| <b>Printed Name:</b> Rebecca Shields         |                       |  |
| <b>Title:</b> Connection Specialist          |                       |  |

**\*PLEASE READ BEFORE SIGNING:** By signing and submitting this form, I, on my own behalf or as a representative of the company identified above, as applicable, expressly represent that I am authorized to make the above factual representation on behalf of said company and/or myself, as applicable, and under penalty of perjury as authorized by Iowa Code section 622.1 and pursuant to the laws of the state of Iowa, certify the following with respect to this form submitted on behalf of said company and/or myself: any statements, representations, warranties, certifications, or attestations made in this form, including any attachments or enclosures associated therewith, are true and accurate; I, on behalf of said company and/or myself, have not knowingly made any false statements or representations in this form. In addition to any criminal penalties authorized by Iowa Code section 720.2 that may result from any false statements of material fact made herein or any other remedies available at law, equity, or otherwise, if it is subsequently determined that I have made a statement, representation, warranty, certification, or attestation in this form, or any attachments or enclosures associated herewith, that is later proven untrue in any material respect, the company on which I submitted this form on behalf of may be disqualified from current incentive programs administered by the Office or may be ordered to repay the Office the entire amount of any funds previously distributed by the Office to said company in connection with any current incentive programs administered by the Office. OCIO makes no guarantees as to whether the information supplied by you will result in any change to the Broadband Availability Map V3 or the way any incentive decisions are reviewed, scored, or decided. This form, as completed, any attachments hereto, and any other information or materials submitted to the Office in connection with this form or related inquiry, shall be considered public records and shall be made available for public examination and/or disseminated upon request by third parties as required by Iowa Code chapter 22. The Office reserves the right to reject this form and relatedly consider any information communicated through this form as neither credible nor probative if this form is not fully and properly filled out.

# Appendix D - Mediacom Certification

## EXHIBIT B

### Affirmation, Attestation, and Certification of Service or lack of Service in Census Blocks Broadband Grants Program Broadband Availability Map Challenge Process

|   |                         |                |   |
|---|-------------------------|----------------|---|
| <b>A. COMPANY INFORMATION (if submitted on behalf of an entity)</b> |                         |                |   |
| <b>Company Name:</b>  | Mediacom Communications |                |   |
| <b>Address:</b>   | 1 Mediacom Way          |                |   |
| <b>City:</b>  | Chester                 | <b>State:</b>  | NY <b>Zip:</b> 10918                                  |
| <b>B. DESIGNATED CONTACT INFORMATION</b>                            |                         |                |   |
| <b>Contact Name</b>   | Thomas Larsen           | <b>Phone #</b> | (845) 443 - 2754 <b>Email:</b> tlarsen@mediacomcc.com |
| <b>C. CERTIFICATION/ATTESTATION/AFFIRMATION</b>                     |                         |                |   |

In signing and submitting this form, the above-identified company, and its duly authorized representative signing on behalf thereof, hereby affirms, attests, and certifies under penalty of perjury that, as represented in its submission:

1. Company, consistent with the representations made in this form, and regardless of whether your company's prior reporting to the FCC or State of Iowa was correct or in error, either:
  - a. Facilitated material Broadband service at or above twenty-five (25) megabits per second of download speed and three (3) megabits per second of upload speed ("**25/3 Broadband**") in the identified census blocks as of July 31, 2020; or
  - b. Did **NOT** offer or Facilitate 25/3 Broadband in the identified census blocks as of July 31, 2020;

| CENSUS BLOCK ID IN WHICH 25/3 BROADBAND OFFERED OR FACILITATED | 25/3 Broadband materially FACILITATED AS OF July 31, 2020<br><small>Yes means 25/3 broadband was offered or facilitated as of July 31, 2020<br/>No means 25/3 broadband was not offered or facilitated as of July 31, 2020</small> |
|--|--|
| 190119602002016  | <input type="checkbox"/> Yes <input checked="" type="checkbox"/> No  |
| 190119602002018  | <input checked="" type="checkbox"/> Yes <input type="checkbox"/> No  |
| 191712901001025  | <input checked="" type="checkbox"/> Yes <input type="checkbox"/> No  |
| 191712901001029  | <input checked="" type="checkbox"/> Yes <input type="checkbox"/> No  |
| 191712901002027  | <input checked="" type="checkbox"/> Yes <input type="checkbox"/> No  |

|                 |   |
|-----------------|---|
| 191712901004000 | <input checked="" type="checkbox"/> Yes <input type="checkbox"/> No |
| 191712901004015 | <input checked="" type="checkbox"/> Yes <input type="checkbox"/> No |
| 191712901004028 | <input checked="" type="checkbox"/> Yes <input type="checkbox"/> No |
| 191712901004041 | <input type="checkbox"/> Yes <input checked="" type="checkbox"/> No |
| 191712902003012 | <input checked="" type="checkbox"/> Yes <input type="checkbox"/> No |
| 191712902003049 | <input checked="" type="checkbox"/> Yes <input type="checkbox"/> No |

**D. ADDITIONAL EXPLANATION** (To the extent you believe additional explanation is required to ensure that you are communicating full and accurate information, please use the below space to further explain, qualify, or substantiate your above certification/attestation/affirmation. To the extent necessary, please feel free to upload additional explanations/supporting documentation.)

According to our database, as of July 31, 2020, our network facilitates broadband service at or above 25/3 in these nine (9) census blocks:

190119602002018  
191712901001025  
191712901001029  
191712901002027  
191712901004000  
191712901004015  
191712901004028  
191712902003012  
191712902003049

A copy of the addresses passed by our network in each of the above census blocks is attached hereto.

Our network does not facilitate service in these remaining two (2) census blocks:

190119602002016  
191712901004041

**E. SIGNATURE\***

**Authorized Signature:**



**Date:** December 1, 2020

**Printed Name:** Thomas J. Larsen

**Title:** Senior Vice President

**\*PLEASE READ BEFORE SIGNING:** By signing and submitting this form, I, on my own behalf or as a representative of the company identified above, as applicable, expressly represent that I am authorized to make the above factual representation on behalf of said company and/or

myself, as applicable, and under penalty of perjury as authorized by Iowa Code section 622.1 and pursuant to the laws of the state of Iowa, certify the following with respect to this form submitted on behalf of said company and/or myself: any statements, representations, warranties, certifications, or attestations made in this form, including any attachments or enclosures associated therewith, are true and accurate; I, on behalf of said company and/or myself, have not knowingly made any false statements or representations in this form. In addition to any criminal penalties authorized by Iowa Code section 720.2 that may result from any false statements of material fact made herein or any other remedies available at law, equity, or otherwise, if it is subsequently determined that I have made a statement, representation, warranty, certification, or attestation in this form, or any attachments or enclosures associated herewith, that is later proven untrue in any material respect, the company on which I submitted this form on behalf of may be disqualified from current incentive programs administered by the Office or may be ordered to repay the Office the entire amount of any funds previously distributed by the Office to said company in connection with any current incentive programs administered by the Office. OCIO makes no guarantees as to whether the information supplied by you will result in any change to the Broadband Availability Map V3 or the way any incentive decisions are reviewed, scored, or decided. This form, as completed, any attachments hereto, and any other information or materials submitted to the Office in connection with this form or related inquiry, shall be considered public records and shall be made available for public examination and/or disseminated upon request by third parties as required by Iowa Code chapter 22. The Office reserves the right to reject this form and relatedly consider any information communicated through this form as neither credible nor probative if this form is not fully and properly filled out.



| ADDRESS                                    | FIPS TRACT BLOCK | COUNTY NAME |
|--|------------------|-------------|
| 609 1ST ST, TRAER, IA, 50675               | 191712902003012  | Tama        |
| 406 WALNUT ST, TRAER, IA, 50675            | 191712902003049  | Tama        |
| 107 SHERMAN ST, DYSART, IA, 52224-9720     | 191712901004000  | Tama        |
| 303 ESTELLE ST, DYSART, IA, 52224          | 191712901002027  | Tama        |
| 511 MAPLE ST, DYSART, IA, 52224            | 191712901004028  | Tama        |
| 601 1ST ST, TRAER, IA, 50675               | 191712902003012  | Tama        |
| 501 HIGHWAY 21 LOT 3, DYSART, IA, 52224    | 191712901004000  | Tama        |
| 307 SHERMAN ST, DYSART, IA, 52224          | 191712901004000  | Tama        |
| 209 ESTELLE ST APT B3, DYSART, IA, 52224   | 191712901002027  | Tama        |
| 602 FAIRLANE ST, DYSART, IA, 52224         | 191712901004000  | Tama        |
| 301 SHERMAN ST, DYSART, IA, 52224          | 191712901004000  | Tama        |
| 402 5TH ST, TRAER, IA, 50675               | 191712902003049  | Tama        |
| 408 5TH ST, TRAER, IA, 50675               | 191712902003049  | Tama        |
| 209 ESTELLE ST APT C4, DYSART, IA, 52224   | 191712901002027  | Tama        |
| 650 2ND ST, TRAER, IA, 50675               | 191712902003012  | Tama        |
| 501 HIGHWAY 21 LOT 8, DYSART, IA, 52224    | 191712901004000  | Tama        |
| 606 1/2 2ND ST, TRAER, IA, 50675           | 191712902003012  | Tama        |
| 610 2ND ST, TRAER, IA, 50675               | 191712902003012  | Tama        |
| 109 1/2 N MAIN ST, TRAER, IA, 50675        | 191712902003012  | Tama        |
| 210 SHERMAN ST, DYSART, IA, 52224          | 191712901004028  | Tama        |
| 402 EAST ST, DYSART, IA, 52224             | 191712901004000  | Tama        |
| 1208 LEER ST, DYSART, IA, 52224            | 191712901004015  | Tama        |
| 501 HIGHWAY 21 LOT 10, DYSART, IA, 52224   | 191712901004000  | Tama        |
| 101 N MAIN ST, TRAER, IA, 50675            | 191712902003012  | Tama        |
| 302 SHERMAN ST, DYSART, IA, 52224          | 191712901004028  | Tama        |
| 1312 CLARK ST, DYSART, IA, 52224           | 191712901004015  | Tama        |
| 612 FAIRLANE ST, DYSART, IA, 52224         | 191712901004000  | Tama        |
| 501 HIGHWAY 21 LOT 7, DYSART, IA, 52224    | 191712901004000  | Tama        |
| 501 HIGHWAY 21 LOT 14, DYSART, IA, 52224   | 191712901004000  | Tama        |
| 416 5TH ST, TRAER, IA, 50675               | 191712902003049  | Tama        |
| 619 1ST ST APT A, TRAER, IA, 50675         | 191712902003012  | Tama        |
| 105 S MAIN ST APT 2, TRAER, IA, 50675      | 191712902003012  | Tama        |
| 209 ESTELLE ST APT C2, DYSART, IA, 52224   | 191712901002027  | Tama        |
| 401 TAMA ST, DYSART, IA, 52224             | 191712901004000  | Tama        |
| 505 HIGHWAY 21 LOT 26, DYSART, IA, 52224   | 191712901004000  | Tama        |
| 303 SHERMAN ST, DYSART, IA, 52224          | 191712901004000  | Tama        |
| 606 2ND ST, TRAER, IA, 50675               | 191712902003012  | Tama        |
| 209 ESTELLE ST APT A3, DYSART, IA, 52224   | 191712901002027  | Tama        |
| 615 1ST ST, TRAER, IA, 50675               | 191712902003012  | Tama        |
| 3146 1/3 HIGHWAY 8, DYSART, IA, 52224-9569 | 191712901001025  | Tama        |
| 706 S MAIN ST, DYSART, IA, 52224           | 191712901004028  | Tama        |
| 911 ESTELLE ST, DYSART, IA, 52224          | 191712901002027  | Tama        |
| 105 S MAIN ST APT 4, TRAER, IA, 50675      | 191712902003012  | Tama        |
| 205 ESTELLE ST, DYSART, IA, 52224          | 191712901002027  | Tama        |
| 501 HIGHWAY 21 LOT 18, DYSART, IA, 52224   | 191712901004000  | Tama        |
| 5940 HIGHWAY 21, DYSART, IA, 52224-9400    | 190119602002018  | Benton      |
| 417 4TH ST, TRAER, IA, 50675               | 191712902003049  | Tama        |
| 505 HIGHWAY 21 LOT 28, DYSART, IA, 52224   | 191712901004000  | Tama        |

|  |                 |      |
|--|-----------------|------|
| 109 1/2 N MAIN ST, TRAER, IA, 50675      | 191712902003012 | Tama |
| 601 ESTELLE ST, DYSART, IA, 52224        | 191712901002027 | Tama |
| 414 5TH ST, TRAER, IA, 50675             | 191712902003049 | Tama |
| 617 1ST ST, TRAER, IA, 50675             | 191712902003012 | Tama |
| 505 HIGHWAY 21 LOT 1, DYSART, IA, 52224  | 191712901004000 | Tama |
| 501 HIGHWAY 21 LOT 17, DYSART, IA, 52224 | 191712901004000 | Tama |
| 405 4TH ST, TRAER, IA, 50675             | 191712902003049 | Tama |
| 702 S MAIN ST, DYSART, IA, 52224         | 191712901004028 | Tama |
| 501 HIGHWAY 21 LOT 6, DYSART, IA, 52224  | 191712901004000 | Tama |
| 406 EAST ST, DYSART, IA, 52224           | 191712901004000 | Tama |
| 1207 PLEASANT ST, DYSART, IA, 52224      | 191712901004015 | Tama |
| 719 CODY ST, DYSART, IA, 52224           | 191712901004028 | Tama |
| 501 HIGHWAY 21 LOT 11, DYSART, IA, 52224 | 191712901004000 | Tama |
| 901 ESTELLE ST, DYSART, IA, 52224        | 191712901002027 | Tama |
| 107 SHERMAN ST, DYSART, IA, 52224        | 191712901004000 | Tama |
| 611 1ST ST, TRAER, IA, 50675             | 191712902003012 | Tama |
| 209 ESTELLE ST APT A2, DYSART, IA, 52224 | 191712901002027 | Tama |
| 407 PARK ST, DYSART, IA, 52224           | 191712901004028 | Tama |
| 105 S MAIN ST APT 1, TRAER, IA, 50675    | 191712902003012 | Tama |
| 209 ESTELLE ST APT A1, DYSART, IA, 52224 | 191712901002027 | Tama |
| 501 HIGHWAY 21 LOT 16, DYSART, IA, 52224 | 191712901004000 | Tama |
| 503 PARK ST, DYSART, IA, 52224           | 191712901004028 | Tama |
| 634 2ND ST, TRAER, IA, 50675             | 191712902003012 | Tama |
| 105 S MAIN ST APT 5, TRAER, IA, 50675    | 191712902003012 | Tama |
| 501 HIGHWAY 21 LOT 5, DYSART, IA, 52224  | 191712901004000 | Tama |
| 506 FAIRLANE ST, DYSART, IA, 52224       | 191712901004000 | Tama |
| 101 N MAIN ST, TRAER, IA, 50675          | 191712902003012 | Tama |
| 1308 CLARK ST, DYSART, IA, 52224         | 191712901004015 | Tama |
| 404 SHERMAN ST, DYSART, IA, 52224        | 191712901004028 | Tama |
| 608 FAIRLANE ST, DYSART, IA, 52224       | 191712901004000 | Tama |
| 501 HIGHWAY 21 LOT 12, DYSART, IA, 52224 | 191712901004000 | Tama |
| 628 2ND ST, TRAER, IA, 50675             | 191712902003012 | Tama |
| 406 TAMA ST UNIT 2, DYSART, IA, 52224    | 191712901004000 | Tama |
| 501 HIGHWAY 21 LOT 2, DYSART, IA, 52224  | 191712901004000 | Tama |
| 801 HIGHWAY 21, DYSART, IA, 52224        | 191712901004000 | Tama |
| 1206 CLARK ST, DYSART, IA, 52224         | 191712901004015 | Tama |
| 604 1/2 2ND ST, TRAER, IA, 50675         | 191712902003012 | Tama |
| 510 FAIRLANE ST, DYSART, IA, 52224       | 191712901004000 | Tama |
| 608 2ND ST, TRAER, IA, 50675             | 191712902003012 | Tama |
| 1302 CLARK ST, DYSART, IA, 52224         | 191712901004015 | Tama |
| 413 4TH ST, TRAER, IA, 50675             | 191712902003049 | Tama |
| 305 ESTELLE ST, DYSART, IA, 52224        | 191712901002027 | Tama |
| 411 4TH ST, TRAER, IA, 50675             | 191712902003049 | Tama |
| 602 1/2 2ND ST APT UP, TRAER, IA, 50675  | 191712902003012 | Tama |
| 1212 CLARK ST, DYSART, IA, 52224         | 191712901004015 | Tama |
| 1410 CLARK ST, DYSART, IA, 52224         | 191712901004015 | Tama |
| 501 HIGHWAY 21 LOT 15, DYSART, IA, 52224 | 191712901004000 | Tama |
| 406 TAMA ST UNIT 1, DYSART, IA, 52224    | 191712901004000 | Tama |
| 206 CLARK ST, DYSART, IA, 52224          | 191712901004000 | Tama |



|  |                 |      |
|--|-----------------|------|
| 621 1ST ST, TRAER, IA, 50675             | 191712902003012 | Tama |
| 622 1/2 2ND ST, TRAER, IA, 50675         | 191712902003012 | Tama |
| 619 1ST ST # C, TRAER, IA, 50675         | 191712902003012 | Tama |
| 607 1ST ST, TRAER, IA, 50675             | 191712902003012 | Tama |
| 512 MAPLE ST, DYSART, IA, 52224          | 191712901004028 | Tama |
| 505 HIGHWAY 21 LOT 31, DYSART, IA, 52224 | 191712901004000 | Tama |
| 905 ESTELLE ST, DYSART, IA, 52224        | 191712901002027 | Tama |
| 409 ESTELLE ST, DYSART, IA, 52224        | 191712901002027 | Tama |
| 610 FAIRLANE ST, DYSART, IA, 52224       | 191712901004000 | Tama |
| 405 ESTELLE ST, DYSART, IA, 52224        | 191712901002027 | Tama |
| 1001 ESTELLE ST, DYSART, IA, 52224       | 191712901002027 | Tama |
| 640 2ND ST, TRAER, IA, 50675             | 191712902003012 | Tama |
| 106 LINN ST, TRAER, IA, 50675            | 191712902003012 | Tama |
| 606 FAIRLANE ST, DYSART, IA, 52224       | 191712901004000 | Tama |
| 602 2ND ST, TRAER, IA, 50675             | 191712902003012 | Tama |
| 617 WEST ST, DYSART, IA, 52224           | 191712901004015 | Tama |
| 603 ESTELLE ST, DYSART, IA, 52224        | 191712901002027 | Tama |
| 209 ESTELLE ST APT B1, DYSART, IA, 52224 | 191712901002027 | Tama |
| 619 1ST ST APT D, TRAER, IA, 50675       | 191712902003012 | Tama |
| 623 1ST ST, TRAER, IA, 50675             | 191712902003012 | Tama |
| 507 ESTELLE ST, DYSART, IA, 52224        | 191712901002027 | Tama |
| 619 1ST ST APT B, TRAER, IA, 50675       | 191712902003012 | Tama |
| 630 2ND ST, TRAER, IA, 50675             | 191712902003012 | Tama |
| 505 HIGHWAY 21 LOT 23, DYSART, IA, 52224 | 191712901004000 | Tama |
| 505 HIGHWAY 21 LOT 27, DYSART, IA, 52224 | 191712901004000 | Tama |
| 2854 HIGHWAY 8, TRAER, IA, 50675         | 191712901001029 | Tama |
| 204 CLARK ST, DYSART, IA, 52224          | 191712901004000 | Tama |
| 509 MAPLE ST, DYSART, IA, 52224          | 191712901004028 | Tama |
| 1204 LEER ST, DYSART, IA, 52224          | 191712901004015 | Tama |
| 616 2ND ST APT UP, TRAER, IA, 50675      | 191712902003012 | Tama |
| 625 1ST ST, TRAER, IA, 50675             | 191712902003012 | Tama |
| 1406 CLARK ST, DYSART, IA, 52224         | 191712901004015 | Tama |
| 104 CRISMAN ST, DYSART, IA, 52224        | 191712901002027 | Tama |
| 805 ESTELLE ST, DYSART, IA, 52224        | 191712901002027 | Tama |
| 510 MAPLE ST, DYSART, IA, 52224          | 191712901004028 | Tama |
| 1211 PLEASANT ST, DYSART, IA, 52224      | 191712901004015 | Tama |
| 209 ESTELLE ST APT B4, DYSART, IA, 52224 | 191712901002027 | Tama |
| 1304 CLARK ST, DYSART, IA, 52224         | 191712901004015 | Tama |
| 1203 PLEASANT ST, DYSART, IA, 52224      | 191712901004015 | Tama |
| 646 2ND ST, TRAER, IA, 50675             | 191712902003012 | Tama |
| 714 S MAIN ST, DYSART, IA, 52224         | 191712901004028 | Tama |
| 406 TAMA ST UNIT 3, DYSART, IA, 52224    | 191712901004000 | Tama |
| 412 EAST ST, DYSART, IA, 52224           | 191712901004000 | Tama |
| 209 ESTELLE ST APT C3, DYSART, IA, 52224 | 191712901002027 | Tama |
| 406 SHERMAN ST, DYSART, IA, 52224        | 191712901004028 | Tama |
| 309 ESTELLE ST, DYSART, IA, 52224        | 191712901002027 | Tama |
| 209 ESTELLE ST APT D4, DYSART, IA, 52224 | 191712901002027 | Tama |
| 410 5TH ST, TRAER, IA, 50675             | 191712902003049 | Tama |
| 616 2ND ST, TRAER, IA, 50675             | 191712902003012 | Tama |



|  |                 |      |
|--|-----------------|------|
| 406 TAMA ST UNIT 4, DYSART, IA, 52224    | 191712901004000 | Tama |
| 703 ESTELLE ST, DYSART, IA, 52224        | 191712901002027 | Tama |
| 501 HIGHWAY 21 LOT 4, DYSART, IA, 52224  | 191712901004000 | Tama |
| 501 HIGHWAY 21 LOT 19, DYSART, IA, 52224 | 191712901004000 | Tama |
| 209 ESTELLE ST APT D2, DYSART, IA, 52224 | 191712901002027 | Tama |
| 209 ESTELLE ST APT A4, DYSART, IA, 52224 | 191712901002027 | Tama |
| 505 HIGHWAY 21, DYSART, IA, 52224        | 191712901004000 | Tama |
| 407 4TH ST, TRAER, IA, 50675             | 191712902003049 | Tama |
| 654 2ND ST, TRAER, IA, 50675             | 191712902003012 | Tama |
| 505 WEST ST, DYSART, IA, 52224           | 191712901004015 | Tama |
| 801 ESTELLE ST, DYSART, IA, 52224        | 191712901002027 | Tama |
| 501 HIGHWAY 21 LOT 1, DYSART, IA, 52224  | 191712901004000 | Tama |
| 505 HIGHWAY 21, DYSART, IA, 52224        | 191712901004000 | Tama |
| 1007 ESTELLE ST, DYSART, IA, 52224       | 191712901002027 | Tama |
| 614 2ND ST, TRAER, IA, 50675             | 191712902003012 | Tama |
| 209 ESTELLE ST APT D1, DYSART, IA, 52224 | 191712901002027 | Tama |
| 105 S MAIN ST APT 3, TRAER, IA, 50675    | 191712902003012 | Tama |
| 1402 CLARK ST, DYSART, IA, 52224         | 191712901004015 | Tama |
| 501 HIGHWAY 21 LOT 13, DYSART, IA, 52224 | 191712901004000 | Tama |
| 408 SHERMAN ST, DYSART, IA, 52224        | 191712901004028 | Tama |
| 601 WEST ST, DYSART, IA, 52224           | 191712901004015 | Tama |
| 608 2ND ST, TRAER, IA, 50675             | 191712902003012 | Tama |
| 411 IOWA HIGHWAY 21, DYSART, IA, 52224   | 191712901004000 | Tama |
| 502 FAIRLANE ST, DYSART, IA, 52224       | 191712901004000 | Tama |
| 209 ESTELLE ST APT B2, DYSART, IA, 52224 | 191712901002027 | Tama |
| 613 1ST ST, TRAER, IA, 50675             | 191712902003012 | Tama |
| 209 ESTELLE ST APT C1, DYSART, IA, 52224 | 191712901002027 | Tama |
| 501 HIGHWAY 21 LOT 9, DYSART, IA, 52224  | 191712901004000 | Tama |
| 105 S MAIN ST APT 6, TRAER, IA, 50675    | 191712902003012 | Tama |
| 301 ESTELLE ST, DYSART, IA, 52224        | 191712901002027 | Tama |
| 229 ESTELLE ST APT C1, DYSART, IA, 52224 | 191712901002027 | Tama |
| 401 4TH ST, TRAER, IA, 50675             | 191712902003049 | Tama |
| 209 ESTELLE ST APT D3, DYSART, IA, 52224 | 191712901002027 | Tama |
| 1005 ESTELLE ST, DYSART, IA, 52224       | 191712901002027 | Tama |
| 400 WALNUT ST, TRAER, IA, 50675          | 191712902003049 | Tama |
| 600 2ND ST, TRAER, IA, 50675             | 191712902003012 | Tama |
| 409 PARK ST, DYSART, IA, 52224           | 191712901004028 | Tama |

## Appendix E - La Porte City Telephone Company Certification

### EXHIBIT B

**Affirmation, Attestation, and Certification of Service or lack of Service in Census Blocks  
Broadband Grants Program Broadband Availability Map Challenge Process**

| A. COMPANY INFORMATION (if submitted on behalf of an entity) |                                 |               |                      |
|--|---------------------------------|---------------|----------------------|
| <b>Company Name:</b>   | La Porte City Telephone Company |               |                      |
| <b>Address:</b>  | 306 Main Street                 |               |                      |
| <b>City:</b>   | La Porte                        | <b>State:</b> | IA <b>Zip:</b> 50651 |

| B. DESIGNATED CONTACT INFORMATION |            |                |  |
|-----------------------------------|------------|----------------|--|
| <b>Contact Name</b>               | Chris Hopp | <b>Phone #</b> | (563) 245 - 4480 <b>Email:</b> chris@alpine-communications.com |

| C. CERTIFICATION/ATTESTATION/AFFIRMATION |
|--|
|--|

In signing and submitting this form, the above-identified company, and its duly authorized representative signing on behalf thereof, hereby affirms, attests, and certifies under penalty of perjury that, as represented in its submission:

1. Company, consistent with the representations made in this form, and regardless of whether your company's prior reporting to the FCC or State of Iowa was correct or in error, either:
  - a. Facilitated material Broadband service at or above twenty-five (25) megabits per second of download speed and three (3) megabits per second of upload speed ("**25/3 Broadband**") in the identified census blocks as of July 31, 2020; or
  - b. Did **NOT** offer or Facilitate 25/3 Broadband in the identified census blocks as of July 31, 2020;

| CENSUS BLOCK ID IN WHICH 25/3 BROADBAND OFFERED OR FACILITATED | 25/3 Broadband materially FACILITATED AS OF July 31, 2020<br><small><u>Yes</u> means 25/3 broadband was offered or facilitated as of July 31, 2020<br/><u>No</u> means 25/3 broadband was not offered or facilitated as of July 31, 2020</small> |
|--|--|
| 190119602001060  | [ ] Yes [X] No   |
| 190119602001063  | [X] Yes [ ] No   |
| 191712901002000  | [X] Yes [ ] No   |
| 191712901002001  | [X] Yes [ ] No   |
| 191712901002004  | [X] Yes [ ] No   |




**D. ADDITIONAL EXPLANATION** (To the extent you believe additional explanation is required to ensure that you are communicating full and accurate information, please use the below space to further explain, qualify, or substantiate your above certification/attestation/affirmation. To the extent necessary, please feel free to upload additional explanations/supporting documentation.

In response to a public challenge filed with the OCIO regarding Census Blocks 190119602001060, 190119602001063, 191712901002000, 191712901002001, 191712901002004, La Porte City Telephone Company offers the following comments: All of the Census Blocks in question are currently served by two independent telephone companies, La Porte City Telephone Company and Farmers Cooperative Telephone Company of Dysart, which results in split census blocks (based on IUB exchange boundaries). La Porte City Telephone Company has fiber infrastructure and offers greater than 25M/3M service in all of these Census Blocks except 190119602001060. There are no locations within 190119602001060 within La Porte City Telephone Company's exchange boundary; however, if there were, La Porte City Telephone Company would be able to provide service within a commercially reasonable amount of time. La Porte City Telephone Company has included customer invoices from Census Blocks 190119602001063, 191712901002000, 191712901002001, and 191712901002004 as supporting evidence to this affirmation of service. While these customers may subscribe to a service below 25/3, they do have access to service in excess of 25/3.

**E. SIGNATURE**

Authorized Signature:



Date: 12.3.2020

Printed Name: Chris Hopp

Title: General Manager/COO

**\*PLEASE READ BEFORE SIGNING:** By signing and submitting this form, I, on my own behalf or as a representative of the company identified above, as applicable, expressly represent that I am authorized to make the above factual representation on behalf of said company and/or myself, as applicable, and under penalty of perjury as authorized by Iowa Code section 622.1 and pursuant to the laws of the state of Iowa, certify the following with respect to this form submitted on behalf of said company and/or myself: any statements, representations, warranties, certifications, or attestations made in this form, including any attachments or enclosures associated therewith, are true and accurate; I, on behalf of said company and/or myself, have not knowingly made any false statements or representations in this form. In addition to any criminal penalties authorized by Iowa Code section 720.2 that may result from any false statements of material fact made herein or any other remedies available at law, equity, or otherwise, if it is subsequently determined that I have made a statement, representation, warranty, certification, or attestation in this form, or any attachments or enclosures associated herewith, that is later proven untrue in any material respect, the company on which I submitted this form on behalf of may be disqualified from current incentive programs administered by the Office or may be ordered to repay the Office the entire amount of any funds previously distributed by the Office to said company in connection with any current incentive programs administered by the Office. OCIO makes no guarantees as to whether the information supplied by you will result in any change to the Broadband Availability Map V3 or the way any incentive decisions are reviewed, scored, or decided. This form, as completed, any attachments hereto, and any other information or materials submitted to the Office in connection with this form or related inquiry, shall be considered public records and shall be made available for public examination and/or disseminated upon request by third parties as required by Iowa Code chapter 22. The Office reserves the right to reject this form and relatedly consider any information communicated through this form as neither credible nor probative if this form is not fully and properly filled out.



LPC CONNECT  
306 MAIN ST  
LA PORTE CITY IA 50651

**For All Billing Inquiries, call 319-342-3369**

**Account Number:** [REDACTED]  
**Account Name:** [REDACTED]  
**Bill Date:** December 01, 2020  
**Due Date:** 20TH OF MNTH

BILLING PERIOD IS 12-01-20 TO 12-31-20. PAYMENT IS DUE BY THE 20TH OF THE MONTH. A \$5.00 DELINQUENT FEE WILL APPLY AFTER THE 20TH. OUR OFFICE HOURS ARE 8:00-4:30. A DROP SLOT IS LOCATED IN THE FRONT OF THE MAIN ST BUSINESS OFFICE FOR YOUR CONVENIENCE. VISIT OUR WEBSITE AT WWW.LPCTEL.COM TECH SUPPORT FOR PHONE VIDEO AND INTERNET IS 855-558-9863

| Account Summary                  |                 |
|----------------------------------|-----------------|
| <b>Last Month</b>                |                 |
| Balance from last statement      | 229.39          |
| Payment Received 11/20/2020      | 229.39          |
| <b>Thank You Balance</b>         | <b>\$0.00</b>   |
| <b>This Month</b>                |                 |
| Customer Charges                 | 29.95           |
| Telephone Charges                | 7.50            |
| Long Distance Charges            | 1.20            |
| Internet Charges                 | 40.90           |
| Video Charges                    | 136.75          |
| FEDERAL TAX                      | 0.85            |
| STATE TAX                        | 10.08           |
| LOCAL TAX                        | 1.68            |
| Federal Universal Service Charge | 1.76            |
| <b>Current Charges</b>           | <b>\$230.67</b> |
| <b>Total Amount Due</b>          | <b>\$230.67</b> |

0136 - 342

\*\*\* DETACH AND RETURN THIS PORTION WITH YOUR PAYMENT \*\*\*

LPC CONNECT  
PO BOX 185  
LA PORTE CITY IA 50651

[REDACTED]  
1162 53RD ST  
LA PORTE CITY IA 50651-9638



FOR CHANGE OF ADDRESS: Please check here and complete form on reverse. Thank you.

**Account Number:** [REDACTED]  
**Bill Date:** December 01, 2020  
**Due Date:** 20TH OF MNTH  
**Phone Number:** [REDACTED]

Remit To:  
LPC CONNECT  
PO BOX 185  
LA PORTE CITY IA 50651-0185

**\*\*Do Not Pay\*\*  
Bill Will Be Paid Automatically  
By Your Bank**



**LONG DISTANCE DEFINITIONS**

**Period**

D = Day  
E = Evening  
N = Night  
W = Weekend

MP = Multi Rate Periods  
P = Peak  
O = Off Peak

**Type**

CB = Person Call Back  
CP = Calling Plan  
CC = Calling Card  
CL = Collect  
DC = Directory Assistance Call Completion  
DD = Direct Dialed  
DI = International Evenings

EC = International Nights  
OP = Operator Handled  
PF = Pay Phone  
PP = Person to Person  
TF = Toll Free  
TN = Third Number

**Terms of Service**

The terms of service for services provided by LPC Connect are set forth in our applicable service agreements, terms and conditions of service, service catalogs and rate schedules. We may change rates and other terms of service at anytime by giving you notice. Such notice may be provided on your monthly bill, as a bill insert, by email, on our website, or by other communication as permitted or required by applicable law or regulation. To view the most current version of our terms of service, please visit [www.lpctel.com](http://www.lpctel.com) or contact a customer service representative to request a copy.

**NEW BILLING ADDRESS**

Address: \_\_\_\_\_

City/State: \_\_\_\_\_ Zipcode: \_\_\_\_\_

Telephone: (\_\_\_\_) \_\_\_\_\_

Signature: \_\_\_\_\_



For All Billing Inquiries, call 319-342-3369  
 Account Number: [REDACTED]  
 Account Name: [REDACTED]  
 Due Date: 20TH OF MNTH

**MITTEN, HAT AND SOCK TREE!!**

LPC TELEPHONE IS ONCE AGAIN COLLECTING NEW MITTENS, HATS AND SOCKS TO BE DISTRIBUTED TO LOCAL RESIDENTS IN NEED FOR THE HOLIDAYS DONATIONS CAN BE DROPPED OFF AT THE OFFICE MONDAY THROUGH FRIDAY 8-4:30 THERE WILL BE A DROP BOX INSIDE THE FRONT ENTRYWAY

**LPC FOOD PANTRY**

LPC CONNECT JOINS FORCES WITH THRIFTWAY AND HAWKINS LIBRARY TO COMBAT HUNGER THROUGH DEC 31ST, THRIFTWAY WILL DONATE ONE TOTE OF GROCERIES FOR EVERY FIVE TOTES DONATED FROM PURCHASES MADE AT THRIFTWAY. FILL THE TOTE WITH ITEMS FROM THRIFTWAY, LEAVE THE TOTE AT THRIFTWAY AND THEY WILL DONATE ONE TOTE FOR EVERY FIVE TOTES DONATED BY THRIFTWAY PATRONS TO THE LPC FOOD PANTRY....THANK YOU!!! YOU MAY ALSO DROP OFF FOOD DONATIONS AT HAWKINS MEMORIAL LIBRARY

**Current Customer Charges for [REDACTED]**

*Non-Payment of charges noted with an asterisk (\*) may result in disconnection of your local telephone service*

**Monthly Charges Service**

|                               | Dates             | Duration | Qty | Amount | Total          |
|-------------------------------|-------------------|----------|-----|--------|----------------|
| LPC SAVINGS PAK               | 12/01/20-12/31/20 | 1 MONTH  | 1   | 29.95  | 29.95          |
| * BUNDLE CALLING FEATURE LPCR |                   |          |     |        |                |
| * RURAL RESIDENTIAL           |                   |          |     |        |                |
| * CALL WAITING                |                   |          |     |        |                |
| * CALLER ID NAME & NUMBER     |                   |          |     |        |                |
| Subtotal Monthly Charges      |                   |          |     |        | <u>\$29.95</u> |

| Taxes, Surcharges & Fees          | Total Tax     |
|-----------------------------------|---------------|
| FEDERAL TAX                       | 0.65          |
| STATE TAX                         | 1.80          |
| LOCAL TAX                         | 0.30          |
| Subtotal Taxes, Surcharges & Fees | <u>\$2.75</u> |

*The Customer charges shown above are being billed on behalf of LPC CONNECT 319-342-3369*

**Current Telephone Service**

*Non-Payment of charges noted with an asterisk (\*) may result in disconnection of your local telephone service*

Telephone No [REDACTED]

**Monthly Charges Service**

|  | Dates | Duration | Qty | Amount | Total |
|--|-------|----------|-----|--------|-------|
|--|-------|----------|-----|--------|-------|



For All Billing Inquiries, call 319-342-3369  
 Account Number: [REDACTED]  
 Account Name: [REDACTED]  
 Due Date: 20TH OF MNTH

|                           |                   |         |   |      |        |
|---------------------------|-------------------|---------|---|------|--------|
| * BANK COLLECT            | 12/01/20-12/31/20 | 1 MONTH | 1 | 0.00 | 0.00   |
| * FED ACCESS CHARGE - RES | 12/01/20-12/31/20 | 1 MONTH | 1 | 6.50 | 6.50   |
| 911 BENTON - RESIDENTIAL  | 12/01/20-12/31/20 | 1 MONTH | 1 | 1.00 | 1.00   |
| Subtotal Monthly Charges  |                   |         |   |      | \$7.50 |

The company you have chosen for your InterLATA calls (long distance calls outside your local toll calling area) is LPC LONG DISTANCE

The company you have chosen for your intraLATA calls (long distance calls inside your local toll calling area) is LPC LONG DISTANCE

**Taxes, Surcharges & Fees**

|  |               |
|--|---------------|
| FEDERAL TAX                                  | 0.20          |
| Federal Universal Service Charge             | 1.76          |
| <b>Subtotal Taxes, Surcharges &amp; Fees</b> | <b>\$1.96</b> |

The Telephone charges shown above are being billed on behalf of LPC CONNECT 319-342-3369

**Current Long Distance Charges**

Telephone No [REDACTED]  
 LPC LONG DISTANCE

These calls are classified as Basic Service Charges and non-payment of these charges may result in disconnection of your local telephone service.

**Direct Dialed Calls**

| Seq #                                  | Date       | Time       | Number     | Location   | Period | Type | Min        | Charge | Total       | From City |
|--|------------|------------|------------|------------|--------|------|------------|--------|-------------|-----------|
| 1.                                     | [REDACTED] | [REDACTED] | [REDACTED] | [REDACTED] | D      | DD   | [REDACTED] | 0.15   |             |           |
| 2.                                     | [REDACTED] | [REDACTED] | [REDACTED] | [REDACTED] | D      | DD   | [REDACTED] | 1.05   |             |           |
|  |            |            |            |            |        |      |            | 1.20   | 1.20        |           |
| <b>Total</b>                           |            |            |            |            |        |      |            |        | <b>1.20</b> |           |
| LPC LONG DISTANCE Subtotal             |            |            |            |            |        |      |            |        | 1.20        |           |
| STATE TAX                              |            |            |            |            |        |      |            |        | 0.07        |           |
| LOCAL TAX                              |            |            |            |            |        |      |            |        | 0.01        |           |
| <b>Total LPC LONG DISTANCE Charges</b> |            |            |            |            |        |      |            |        | <b>1.28</b> |           |

**Current Internet Service**

Internet ID [REDACTED]  
 Monthly Charges

| Service                           | Dates             | Duration | Qty | Amount | Total   |
|-----------------------------------|-------------------|----------|-----|--------|---------|
| TECH HOME PROTECT - BUNDLED       | 12/01/20-12/31/20 | 1 MONTH  | 1   | 5.95   | 5.95    |
| BUNDLED FUSION HS INTERNET-SILVER | 12/01/20-12/31/20 | 1 MONTH  | 1   | 34.95  | 34.95   |
| Subtotal Monthly Charges          |                   |          |     |        | \$40.90 |

The Internet charges shown above are being billed on behalf of LPC CONNECT 319-342-3369

**Current Video Service**

Video ID [REDACTED]  
 Monthly Charges

| Service                | Dates             | Duration | Qty | Amount | Total |
|------------------------|-------------------|----------|-----|--------|-------|
| BUNDLED PREMIER        | 12/01/20-12/31/20 | 1 MONTH  | 1   | 99.95  | 99.95 |
| HD DIGITAL BOX - ADDTL | 12/01/20-12/31/20 | 1 MONTH  | 1   | 4.95   | 4.95  |
| WHOLE HOME DVR         | 12/01/20-12/31/20 | 1 MONTH  | 1   | 9.95   | 9.95  |
| WHOLE HOME DVR - ADDTL | 12/01/20-12/31/20 | 1 MONTH  | 1   | 11.95  | 11.95 |



For All Billing Inquiries, call 319-342-3369  
Account Number: [REDACTED]  
Account Name:  
Due Date: 20TH OF MNTH

---

|                                     |                   |         |   |      |              |
|-------------------------------------|-------------------|---------|---|------|--------------|
| PREMIER HD EQUIPMENT FEE            | 12/01/20-12/31/20 | 1 MONTH | 1 | 9.95 | 9.95         |
| Subtotal Monthly Charges            |                   |         |   |      | \$136.75     |
| <b>Taxes, Surcharges &amp; Fees</b> |                   |         |   |      | <b>Total</b> |
| STATE TAX                           |                   |         |   |      | 8.21         |
| LOCAL TAX                           |                   |         |   |      | 1.37         |
| Subtotal Taxes, Surcharges & Fees   |                   |         |   |      | \$9.58       |

*The Video charges shown above are being billed on behalf of LPC CONNECT 319-342-3369*





For All Billing Inquiries, call 319-342-3369  
Account Number: [REDACTED]  
Account Name:  
Due Date: 20TH OF MNTH

Page 6 of 6

---

\*\*\* This page intentionally left blank \*\*\*



LPC CONNECT  
306 MAIN ST  
LA PORTE CITY IA 50651

**For All Billing Inquiries, call 319-342-3369**  
**Account Number:** [REDACTED]  
**Account Name:** [REDACTED]  
**Bill Date:** December 01, 2020  
**Due Date:** 20TH OF MNTH

BILLING PERIOD IS 12-01-20 TO 12-31-20. PAYMENT IS DUE BY THE 20TH OF THE MONTH. A \$5.00 DELINQUENT FEE WILL APPLY AFTER THE 20TH. OUR OFFICE HOURS ARE 8:00-4:30. A DROP SLOT IS LOCATED IN THE FRONT OF THE MAIN ST BUSINESS OFFICE FOR YOUR CONVENIENCE. VISIT OUR WEBSITE AT WWW.LPCTEL.COM TECH SUPPORT FOR PHONE VIDEO AND INTERNET IS 855-558-9863

| Account Summary                  |                   |
|----------------------------------|-------------------|
| <b>Last Month</b>                |                   |
| Balance from last statement      | 153.02CR          |
| Payment Received 11/09/2020      | 100.00            |
| <b>Credit Balance Forward</b>    | <b>\$253.02CR</b> |
| <b>This Month</b>                |                   |
| Telephone Charges                | 30.00             |
| Internet Charges                 | 39.95             |
| FEDERAL TAX                      | 0.87              |
| STATE TAX                        | 1.35              |
| LOCAL TAX                        | 0.23              |
| Federal Universal Service Charge | 1.76              |
| <b>Subtotal Current Charges</b>  | <b>\$74.16</b>    |
| Credit Balance Forward           | 253.02CR          |
| <b>Total Amount Due</b>          | <b>\$178.86CR</b> |

0136 - 342

\*\*\* DETACH AND RETURN THIS PORTION WITH YOUR PAYMENT \*\*\*

LPC CONNECT  
PO BOX 185  
LA PORTE CITY IA 50651



FOR CHANGE OF ADDRESS: Please check here and complete form on reverse. Thank you.

**Account Number:** [REDACTED]  
**Bill Date:** December 01, 2020  
**Due Date:** 20TH OF MNTH  
**Phone Number:** [REDACTED]

[REDACTED]  
1010 COUNTY HIGHWAY V37  
LA PORTE CITY IA 50651

Remit To:  
LPC CONNECT  
PO BOX 185  
LA PORTE CITY IA 50651-0185

**\*\*Credit Amount -  
Do Not Make Payment\*\***

**LONG DISTANCE DEFINITIONS**

**Period**

D = Day  
E = Evening  
N = Night  
W = Weekend

MP = Multi Rate Periods  
P = Peak  
O = Off Peak

**Type**

CB = Person Call Back  
CP = Calling Plan  
CC = Calling Card  
CL = Collect  
DC = Directory Assistance Call Completion  
DD = Direct Dialed  
DI = International Evenings

EC = International Nights  
OP = Operator Handled  
PF = Pay Phone  
PP = Person to Person  
TF = Toll Free  
TN = Third Number

**Terms of Service**

The terms of service for services provided by LPC Connect are set forth in our applicable service agreements, terms and conditions of service, service catalogs and rate schedules. We may change rates and other terms of service at anytime by giving you notice. Such notice may be provided on your monthly bill, as a bill insert, by email, on our website, or by other communication as permitted or required by applicable law or regulation. To view the most current version of our terms of service, please visit [www.lpctel.com](http://www.lpctel.com) or contact a customer service representative to request a copy.

**NEW BILLING ADDRESS**

Address: \_\_\_\_\_

City/State: \_\_\_\_\_ Zipcode: \_\_\_\_\_

Telephone: (\_\_\_\_) \_\_\_\_\_

Signature: \_\_\_\_\_



For All Billing Inquiries, call 319-342-3369  
 Account Number: [REDACTED]  
 Account Name: [REDACTED]  
 Due Date: 20TH OF MNTH

**MITTEN, HAT AND SOCK TREE!!**

LPC TELEPHONE IS ONCE AGAIN COLLECTING NEW MITTENS, HATS AND SOCKS TO BE DISTRIBUTED TO LOCAL RESIDENTS IN NEED FOR THE HOLIDAYS DONATIONS CAN BE DROPPED OFF AT THE OFFICE MONDAY THROUGH FRIDAY 8-4:30 THERE WILL BE A DROP BOX INSIDE THE FRONT ENTRYWAY

**LPC FOOD PANTRY**

LPC CONNECT JOINS FORCES WITH THRIFTWAY AND HAWKINS LIBRARY TO COMBAT HUNGER THROUGH DEC 31ST, THRIFTWAY WILL DONATE ONE TOTE OF GROCERIES FOR EVERY FIVE TOTES DONATED FROM PURCHASES MADE AT THRIFTWAY. FILL THE TOTE WITH ITEMS FROM THRIFTWAY, LEAVE THE TOTE AT THRIFTWAY AND THEY WILL DONATE ONE TOTE FOR EVERY FIVE TOTES DONATED BY THRIFTWAY PATRONS TO THE LPC FOOD PANTRY...THANK YOU!!! YOU MAY ALSO DROP OFF FOOD DONATIONS AT HAWKINS MEMORIAL LIBRARY

**Current Telephone Service**

*Non-Payment of charges noted with an asterisk (\*) may result in disconnection of your local telephone service*

Telephone No [REDACTED]  
 Monthly Charges

| Service                   | Dates             | Duration | Qty | Amount | Total          |
|---------------------------|-------------------|----------|-----|--------|----------------|
| * RURAL RESIDENTIAL       | 12/01/20-12/31/20 | 1 MONTH  | 1   | 22.50  | 22.50          |
| * FED ACCESS CHARGE - RES | 12/01/20-12/31/20 | 1 MONTH  | 1   | 6.50   | 6.50           |
| 911 TAMA - RESIDENTIAL    | 12/01/20-12/31/20 | 1 MONTH  | 1   | 1.00   | 1.00           |
| Subtotal Monthly Charges  |                   |          |     |        | <b>\$30.00</b> |

The company you have chosen for your InterLATA calls (long distance calls outside your local toll calling area) is AOS

The company you have chosen for your intraLATA calls (long distance calls inside your local toll calling area) is AOS

| Taxes, Surcharges & Fees          | Total Tax     |
|-----------------------------------|---------------|
| FEDERAL TAX                       | 0.87          |
| STATE TAX                         | 1.35          |
| LOCAL TAX                         | 0.23          |
| Federal Universal Service Charge  | 1.76          |
| Subtotal Taxes, Surcharges & Fees | <b>\$4.21</b> |

*The Telephone charges shown above are being billed on behalf of LPC CONNECT 319-342-3369*

**Current Internet Service**

Internet ID [REDACTED]  
 Monthly Charges

| Service                     | Dates             | Duration | Qty | Amount | Total          |
|-----------------------------|-------------------|----------|-----|--------|----------------|
| FUSION HS INTERNET - SILVER | 12/01/20-12/31/20 | 1 MONTH  | 1   | 39.95  | 39.95          |
| Subtotal Monthly Charges    |                   |          |     |        | <b>\$39.95</b> |





For All Billing Inquiries, call 319-342-3369  
Account Number: [REDACTED]  
Account Name: [REDACTED]  
Due Date: 20TH OF MNTH

Page 4 of 4

---

*The Internet charges shown above are being billed on behalf of LPC CONNECT 319-342-3369*



LPC CONNECT  
306 MAIN ST  
LA PORTE CITY IA 50651

For All Billing Inquiries, call 319-342-3369

Account Number: [REDACTED]  
Account Name: [REDACTED]  
Bill Date: December 01, 2020  
Due Date: 20TH OF MNTH

BILLING PERIOD IS 12-01-20 TO 12-31-20. PAYMENT IS DUE BY THE 20TH OF THE MONTH. A \$5.00 DELINQUENT FEE WILL APPLY AFTER THE 20TH. OUR OFFICE HOURS ARE 8:00-4:30. A DROP SLOT IS LOCATED IN THE FRONT OF THE MAIN ST BUSINESS OFFICE FOR YOUR CONVENIENCE. VISIT OUR WEBSITE AT WWW.LPCTEL.COM TECH SUPPORT FOR PHONE VIDEO AND INTERNET IS 855-558-9863

| Account Summary                  |                 |
|----------------------------------|-----------------|
| <b>Last Month</b>                |                 |
| Balance from last statement      | 127.06          |
| Payment Received 11/02/2020      | 127.06          |
| <b>Thank You Balance</b>         | <b>\$0.00</b>   |
| <b>This Month</b>                |                 |
| Customer Charges                 | 29.95           |
| Telephone Charges                | 17.45           |
| Internet Charges                 | 74.95           |
| FEDERAL TAX                      | 0.85            |
| STATE TAX                        | 1.80            |
| LOCAL TAX                        | 0.30            |
| Federal Universal Service Charge | 1.76            |
| <b>Current Charges</b>           | <b>\$127.06</b> |
| <b>Total Amount Due</b>          | <b>\$127.06</b> |

0136 - 342

\*\*\* DETACH AND RETURN THIS PORTION WITH YOUR PAYMENT \*\*\*

LPC CONNECT  
PO BOX 185  
LA PORTE CITY IA 50651



FOR CHANGE OF ADDRESS: Please check here and complete form on reverse. Thank you.

Account Number: [REDACTED]  
Bill Date: December 01, 2020  
Due Date: 20TH OF MNTH  
Telephone: [REDACTED]

[REDACTED]  
359 ROCK ISLAND AVE  
WATERLOO IA 50701-5301

Remit To:  
LPC CONNECT  
PO BOX 185  
LA PORTE CITY IA 50651-0185

Balance Due - Please Remit: \$127.06

Amount Enclosed: \$ [REDACTED]

**LONG DISTANCE DEFINITIONS**

**Period**

D = Day  
E = Evening  
N = Night  
W = Weekend

MP = Multi Rate Periods  
P = Peak  
O = Off Peak

**Type**

CB = Person Call Back  
CP = Calling Plan  
CC = Calling Card  
CL = Collect  
DC = Directory Assistance Call Completion  
DD = Direct Dialed  
DI = International Evenings

EC = International Nights  
OP = Operator Handled  
PF = Pay Phone  
PP = Person to Person  
TF = Toll Free  
TN = Third Number

**Terms of Service**

The terms of service for services provided by LPC Connect are set forth in our applicable service agreements, terms and conditions of service, service catalogs and rate schedules. We may change rates and other terms of service at anytime by giving you notice. Such notice may be provided on your monthly bill, as a bill insert, by email, on our website, or by other communication as permitted or required by applicable law or regulation. To view the most current version of our terms of service, please visit [www.lpcotel.com](http://www.lpcotel.com) or contact a customer service representative to request a copy.

**NEW BILLING ADDRESS**

Address: \_\_\_\_\_

City/State: \_\_\_\_\_ Zipcode: \_\_\_\_\_

Telephone: (\_\_\_\_) \_\_\_\_\_

Signature: \_\_\_\_\_



For All Billing Inquiries, call 319-342-3369  
 Account Number: [REDACTED]  
 Account Name: [REDACTED]  
 Due Date: 20TH OF MNTH

**MITTEN, HAT AND SOCK TREE!!**

LPC TELEPHONE IS ONCE AGAIN COLLECTING NEW MITTENS, HATS AND SOCKS TO BE DISTRIBUTED TO LOCAL RESIDENTS IN NEED FOR THE HOLIDAYS DONATIONS CAN BE DROPPED OFF AT THE OFFICE MONDAY THROUGH FRIDAY 8-4:30 THERE WILL BE A DROP BOX INSIDE THE FRONT ENTRYWAY

**LPC FOOD PANTRY**

LPC CONNECT JOINS FORCES WITH THRIFTWAY AND HAWKINS LIBRARY TO COMBAT HUNGER THROUGH DEC 31ST, THRIFTWAY WILL DONATE ONE TOTE OF GROCERIES FOR EVERY FIVE TOTES DONATED FROM PURCHASES MADE AT THRIFTWAY. FILL THE TOTE WITH ITEMS FROM THRIFTWAY, LEAVE THE TOTE AT THRIFTWAY AND THEY WILL DONATE ONE TOTE FOR EVERY FIVE TOTES DONATED BY THRIFTWAY PATRONS TO THE LPC FOOD PANTRY....THANK YOU!!!  
 YOU MAY ALSO DROP OFF FOOD DONATIONS AT HAWKINS MEMORIAL LIBRARY

**Current Customer Charges for [REDACTED]**

*Non-Payment of charges noted with an asterisk (\*) may result in disconnection of your local telephone service*

**Customer No** [REDACTED]

**Monthly Charges Service**

| Service                       | Dates             | Duration | Qty | Amount | Total   |
|-------------------------------|-------------------|----------|-----|--------|---------|
| LPC SAVINGS PAK               | 12/01/20-12/31/20 | 1 MONTH  | 1   | 29.95  | 29.95   |
| * BUNDLE CALLING FEATURE LPCR |                   |          |     |        |         |
| * RURAL RESIDENTIAL           |                   |          |     |        |         |
| * CALL WAITING/CID            |                   |          |     |        |         |
| * CALLER ID NAME & NUMBER     |                   |          |     |        |         |
| Subtotal Monthly Charges      |                   |          |     |        | \$29.95 |

**Taxes, Surcharges & Fees**

|                                   |        |
|-----------------------------------|--------|
| FEDERAL TAX                       | 0.65   |
| STATE TAX                         | 1.80   |
| LOCAL TAX                         | 0.30   |
| Subtotal Taxes, Surcharges & Fees | \$2.75 |

*The Customer charges shown above are being billed on behalf of LPC CONNECT 319-342-3369*

**Current Telephone Service**

*Non-Payment of charges noted with an asterisk (\*) may result in disconnection of your local telephone service*

**Telephone No** [REDACTED]

**Monthly Charges Service**

| Service | Dates | Duration | Qty | Amount | Total |
|---------|-------|----------|-----|--------|-------|
|---------|-------|----------|-----|--------|-------|





For All Billing Inquiries, call 319-342-3369  
 Account Number: [REDACTED]  
 Account Name:  
 Due Date: 20TH OF MNTH

|                                |                   |         |    |      |         |
|--------------------------------|-------------------|---------|----|------|---------|
| * FED ACCESS CHARGE - RES      | 12/01/20-12/31/20 | 1 MONTH | 1  | 6.50 | 6.50    |
| LPC CALLING PLAN C 150 MINUTES | 12/01/20-12/31/20 | 1 MONTH | 1  | 9.95 | 9.95    |
| 911 TAMA - RESIDENTIAL         | 12/01/20-12/31/20 | 1 MONTH | -1 | 1.00 | 1.00    |
| Subtotal Monthly Charges       |                   |         |    |      | \$17.45 |

The company you have chosen for your interLATA calls (long distance calls outside your local toll calling area) is LPC LONG DISTANCE

The company you have chosen for your intraLATA calls (long distance calls inside your local toll calling area) is LPC LONG DISTANCE

|                                     |  |              |
|-------------------------------------|--|--------------|
| <b>Taxes, Surcharges &amp; Fees</b> |  | <b>Total</b> |
| FEDERAL TAX                         |  | 0.20         |
| Federal Universal Service Charge    |  | 1.76         |
| Subtotal Taxes, Surcharges & Fees   |  | \$1.96       |

The Telephone charges shown above are being billed on behalf of LPC CONNECT 319-342-3369

**Current Long Distance Charges**

Telephone No [REDACTED]  
 LPC LONG DISTANCE

These calls are classified as Basic Service Charges and non-payment of these charges may result in disconnection of your local telephone service.

**Calling Plan**  
 PLAN C

| Seq #                                  | Date       | Time       | Number     | Location   | Period | Type | Min        | Charge | Total       | From City |
|--|------------|------------|------------|------------|--------|------|------------|--------|-------------|-----------|
| 1.                                     | [REDACTED] | [REDACTED] | [REDACTED] | [REDACTED] | D      | DD   | [REDACTED] | 0.00   |             |           |
| 2.                                     | [REDACTED] | [REDACTED] | [REDACTED] | [REDACTED] | D      | DD   | [REDACTED] | 0.00   |             |           |
| 3.                                     | [REDACTED] | [REDACTED] | [REDACTED] | [REDACTED] | D      | DD   | [REDACTED] | 0.00   |             |           |
| 4.                                     | [REDACTED] | [REDACTED] | [REDACTED] | [REDACTED] | D      | DD   | [REDACTED] | 0.00   |             |           |
| 5.                                     | [REDACTED] | [REDACTED] | [REDACTED] | [REDACTED] | E      | DD   | [REDACTED] | 0.00   |             |           |
| 6.                                     | [REDACTED] | [REDACTED] | [REDACTED] | [REDACTED] | D      | DD   | [REDACTED] | 0.00   |             |           |
| 7.                                     | [REDACTED] | [REDACTED] | [REDACTED] | [REDACTED] | D      | DD   | [REDACTED] | 0.00   |             |           |
| 8.                                     | [REDACTED] | [REDACTED] | [REDACTED] | [REDACTED] | N      | DD   | [REDACTED] | 0.00   |             |           |
| 9.                                     | [REDACTED] | [REDACTED] | [REDACTED] | [REDACTED] | D      | DD   | [REDACTED] | 0.00   |             |           |
| 10.                                    | [REDACTED] | [REDACTED] | [REDACTED] | [REDACTED] | D      | DD   | [REDACTED] | 0.00   |             |           |
| 11.                                    | [REDACTED] | [REDACTED] | [REDACTED] | [REDACTED] | D      | DD   | [REDACTED] | 0.00   |             |           |
| 12.                                    | [REDACTED] | [REDACTED] | [REDACTED] | [REDACTED] | D      | DD   | [REDACTED] | 0.00   |             |           |
| <b>Total PLAN C</b>                    |            |            |            |            |        |      |            | 0.00   | 0.00        |           |
|  |            |            |            |            |        |      |            |        | <b>0.00</b> |           |
| LPC LONG DISTANCE Subtotal             |            |            |            |            |        |      |            |        | 0.00        |           |
| <b>Total LPC LONG DISTANCE Charges</b> |            |            |            |            |        |      |            |        | <b>0.00</b> |           |

**Current Internet Service**

Internet ID [REDACTED]  
 Monthly Charges

| Service                               | Dates             | Duration | Qty | Amount | Total   |
|---------------------------------------|-------------------|----------|-----|--------|---------|
| BUNDLED FUSION HS INTERNET - PLATINUM | 12/01/20-12/31/20 | 1 MONTH  | 1   | 69.95  | 69.95   |
| NETINS.NET EMAIL ACCOUNT              | 12/01/20-12/31/20 | 1 MONTH  | 1   | 5.00   | 5.00    |
| Subtotal Monthly Charges              |                   |          |     |        | \$74.95 |

The Internet charges shown above are being billed on behalf of LPC CONNECT 319-342-3369



LPC CONNECT  
306 MAIN ST  
LA PORTE CITY IA 50651

For All Billing Inquiries, call 319-342-3369

Account Number: [REDACTED]  
Account Name: [REDACTED]  
Bill Date: December 01, 2020  
Due Date: 20TH OF MNTH

BILLING PERIOD IS 12-01-20 TO 12-31-20. PAYMENT IS DUE BY THE 20TH OF THE MONTH. A \$5.00 DELINQUENT FEE WILL APPLY AFTER THE 20TH. OUR OFFICE HOURS ARE 8:00-4:30. A DROP SLOT IS LOCATED IN THE FRONT OF THE MAIN ST BUSINESS OFFICE FOR YOUR CONVENIENCE. VISIT OUR WEBSITE AT WWW.LPCTEL.COM TECH SUPPORT FOR PHONE VIDEO AND INTERNET IS 855-558-9863

| Account Summary                  |                |
|----------------------------------|----------------|
| <b>Last Month</b>                |                |
| Balance from last statement      | 92.11          |
| Payment Received 11/20/2020      | 92.11          |
| <b>Thank You Balance</b>         | <b>\$0.00</b>  |
| <b>This Month</b>                |                |
| Customer Charges                 | 29.95          |
| Telephone Charges                | 7.50           |
| Internet Charges                 | 49.95          |
| FEDERAL TAX                      | 0.85           |
| STATE TAX                        | 1.80           |
| LOCAL TAX                        | 0.30           |
| Federal Universal Service Charge | 1.76           |
| <b>Current Charges</b>           | <b>\$92.11</b> |
| <b>Total Amount Due</b>          | <b>\$92.11</b> |

0136 - 342

\*\*\* DETACH AND RETURN THIS PORTION WITH YOUR PAYMENT \*\*\*

LPC CONNECT  
PO BOX 185  
LA PORTE CITY IA 50651



FOR CHANGE OF ADDRESS: Please check here and complete form on reverse. Thank you.

Account Number: [REDACTED]  
Bill Date: December 01, 2020  
Due Date: 20TH OF MNTH  
Phone Number: [REDACTED]

[REDACTED]  
1038 W AVE  
BUCKINGHAM IA 50612-9776

Remit To:  
LPC CONNECT  
PO BOX 185  
LA PORTE CITY IA 50651-0185

**\*\*Do Not Pay\*\***  
**Bill Will Be Paid Automatically**  
**By Your Bank**

**LONG DISTANCE DEFINITIONS**

**Period**

D = Day  
E = Evening  
N = Night  
W = Weekend

MP = Multi Rate Periods  
P = Peak  
O = Off Peak

**Type**

CB = Person Call Back  
CP = Calling Plan  
CC = Calling Card  
CL = Collect  
DC = Directory Assistance Call Completion  
DD = Direct Dialed  
DI = International Evenings

EC = International Nights  
OP = Operator Handled  
PF = Pay Phone  
PP = Person to Person  
TF = Toll Free  
TN = Third Number

**Terms of Service**

The terms of service for services provided by LPC Connect are set forth in our applicable service agreements, terms and conditions of service, service catalogs and rate schedules. We may change rates and other terms of service at anytime by giving you notice. Such notice may be provided on your monthly bill, as a bill insert, by email, on our website, or by other communication as permitted or required by applicable law or regulation. To view the most current version of our terms of service, please visit [www.lpctel.com](http://www.lpctel.com) or contact a customer service representative to request a copy.

**NEW BILLING ADDRESS**

Address: \_\_\_\_\_

City/State: \_\_\_\_\_ Zipcode: \_\_\_\_\_

Telephone: (\_\_\_\_) \_\_\_\_\_

Signature: \_\_\_\_\_



For All Billing Inquiries, call 319-342-3369  
 Account Number: [REDACTED]  
 Account Name:  
 Due Date: 20TH OF MNTH

**MITTEN, HAT AND SOCK TREE!!**

LPC TELEPHONE IS ONCE AGAIN COLLECTING NEW MITTENS, HATS AND SOCKS TO BE DISTRIBUTED TO LOCAL RESIDENTS IN NEED FOR THE HOLIDAYS DONATIONS CAN BE DROPPED OFF AT THE OFFICE MONDAY THROUGH FRIDAY 8-4:30 THERE WILL BE A DROP BOX INSIDE THE FRONT ENTRYWAY

**LPC FOOD PANTRY**

LPC CONNECT JOINS FORCES WITH THRIFTWAY AND HAWKINS LIBRARY TO COMBAT HUNGER THROUGH DEC 31ST, THRIFTWAY WILL DONATE ONE TOTE OF GROCERIES FOR EVERY FIVE TOTES DONATED FROM PURCHASES MADE AT THRIFTWAY. FILL THE TOTE WITH ITEMS FROM THRIFTWAY, LEAVE THE TOTE AT THRIFTWAY AND THEY WILL DONATE ONE TOTE FOR EVERY FIVE TOTES DONATED BY THRIFTWAY PATRONS TO THE LPC FOOD PANTRY....THANK YOU!!! YOU MAY ALSO DROP OFF FOOD DONATIONS AT HAWKINS MEMORIAL LIBRARY

**Current Customer Charges for [REDACTED]**

*Non-Payment of charges noted with an asterisk (\*) may result in disconnection of your local telephone service*

**Customer No** [REDACTED]

**Monthly Charges Service**

| Service                       | Dates             | Duration | Qty | Amount | Total   |
|-------------------------------|-------------------|----------|-----|--------|---------|
| * BANK COLLECT                | 12/01/20-12/31/20 | 1 MONTH  | 1   | 0.00   | 0.00    |
| LPC SAVINGS PAK               | 12/01/20-12/31/20 | 1 MONTH  | 1   | 29.95  | 29.95   |
| * BUNDLE CALLING FEATURE LPCR |                   |          |     |        |         |
| * RURAL RESIDENTIAL           |                   |          |     |        |         |
| Subtotal Monthly Charges      |                   |          |     |        | \$29.95 |

**Taxes, Surcharges & Fees**

|  |               |
|--|---------------|
| FEDERAL TAX                                  | 0.65          |
| STATE TAX                                    | 1.80          |
| LOCAL TAX                                    | 0.30          |
| <b>Subtotal Taxes, Surcharges &amp; Fees</b> | <b>\$2.75</b> |

*The Customer charges shown above are being billed on behalf of LPC CONNECT 319-342-3369*

**Current Telephone Service**

*Non-Payment of charges noted with an asterisk (\*) may result in disconnection of your local telephone service*

**Telephone No** [REDACTED]

**Monthly Charges Service**

| Service                   | Dates             | Duration | Qty | Amount | Total |
|---------------------------|-------------------|----------|-----|--------|-------|
| * FED ACCESS CHARGE - RES | 12/01/20-12/31/20 | 1 MONTH  | 1   | 6.50   | 6.50  |
| 911 TAMA - RESIDENTIAL    | 12/01/20-12/31/20 | 1 MONTH  | 1   | 1.00   | 1.00  |





For All Billing Inquiries, call 319-342-3369  
 Account Number: [REDACTED]  
 Account Name: [REDACTED]  
 Due Date: 20TH OF MNTH

Subtotal Monthly Charges \$7.50

The company you have chosen for your InterLATA calls (long distance calls outside your local toll calling area) is AOS

The company you have chosen for your intraLATA calls (long distance calls inside your local toll calling area) is AOS

| <b>Taxes, Surcharges &amp; Fees</b> | <b>Total</b> |
|-------------------------------------|--------------|
| FEDERAL TAX                         | 0.20         |
| Federal Universal Service Charge    | 1.76         |
| Subtotal Taxes, Surcharges & Fees   | \$1.96       |

*The Telephone charges shown above are being billed on behalf of LPC CONNECT 319-342-3369*

**Current Internet Service**

Internet ID [REDACTED]

**Monthly Charges**

| Service                                 | Dates             | Duration | Qty | Amount | Total   |
|---|-------------------|----------|-----|--------|---------|
| BUNDLED FUSION HIGH SPEED INTERNET-GOLD | 12/01/20-12/31/20 | 1 MONTH  | 1   | 49.95  | 49.95   |
| Subtotal Monthly Charges                |                   |          |     |        | \$49.95 |

*The Internet charges shown above are being billed on behalf of LPC CONNECT 319-342-3369*

# Appendix F - LTD Broadband Certification dated 12/10/2020

## EXHIBIT B

### Affirmation, Attestation, and Certification of Service or lack of Service in Census Blocks Broadband Grants Program Broadband Availability Map Challenge Process

|   |                  |               |    |                   |
|---|------------------|---------------|----|-------------------|
| <b>A. COMPANY INFORMATION (if submitted on behalf of an entity)</b> |                  |               |    |                   |
| <b>Company Name:</b>  | LTD Broadband    |               |    |                   |
| <b>Address:</b>   | P O BOX 3064     |               |    |                   |
| <b>City:</b>  | Blooming Prairie | <b>State:</b> | MN | <b>Zip:</b> 55917 |

|  |                 |                |                 |   |
|--|-----------------|----------------|-----------------|---|
| <b>B. DESIGNATED CONTACT INFORMATION</b> |                 |                |                 |   |
| <b>Contact Name</b>                      | Rebecca Shields | <b>Phone #</b> | (507)410 - 0446 | <b>Email:</b> rebeccashields@ltdbroadband.com |

|   |
|---|
| <b>C. CERTIFICATION/ATTESTATION/AFFIRMATION</b> |
|---|

In signing and submitting this form, the above-identified company, and its duly authorized representative signing on behalf thereof, hereby affirms, attests, and certifies under penalty of perjury that, as represented in its submission:

1. Company, consistent with the representations made in this form, and regardless of whether your company's prior reporting to the FCC or State of Iowa was correct or in error, either:
  - a. Facilitated material Broadband service at or above twenty-five (25) megabits per second of download speed and three (3) megabits per second of upload speed ("**25/3 Broadband**") in the identified census blocks as of July 31, 2020; or
  - b. Did **NOT** offer or Facilitate 25/3 Broadband in the identified census blocks as of July 31, 2020;

| CENSUS BLOCK ID IN WHICH 25/3 BROADBAND OFFERED OR FACILITATED | 25/3 Broadband materially FACILITATED AS OF July 31, 2020<br><br><small>Yes means 25/3 broadband was offered or facilitated as of July 31, 2020<br/>No means 25/3 broadband was not offered or facilitated as of July 31, 2020</small> |
|--|--|
| 190119602001152  | <input checked="" type="checkbox"/> Yes <input type="checkbox"/> No  |
| 190119602001156  | <input checked="" type="checkbox"/> Yes <input type="checkbox"/> No  |
| 190119602001158  | <input checked="" type="checkbox"/> Yes <input type="checkbox"/> No  |
| 190119602001169  | <input checked="" type="checkbox"/> Yes <input type="checkbox"/> No  |
| 190119602002012  | <input checked="" type="checkbox"/> Yes <input type="checkbox"/> No  |
| 190119602002014  | <input checked="" type="checkbox"/> Yes <input type="checkbox"/> No  |
| 190119602002021  | <input checked="" type="checkbox"/> Yes <input type="checkbox"/> No  |

|                 |   |
|-----------------|---|
| 190119602002025 | <input checked="" type="checkbox"/> Yes <input type="checkbox"/> No |
| 190119602002028 | <input checked="" type="checkbox"/> Yes <input type="checkbox"/> No |
| 190119602002029 | <input checked="" type="checkbox"/> Yes <input type="checkbox"/> No |
| 190119602002169 | <input checked="" type="checkbox"/> Yes <input type="checkbox"/> No |
| 190119602002180 | <input type="checkbox"/> Yes <input type="checkbox"/> No            |
| 191712901001011 | <input checked="" type="checkbox"/> Yes <input type="checkbox"/> No |
| 191712901001020 | <input checked="" type="checkbox"/> Yes <input type="checkbox"/> No |
| 191712901001043 | <input checked="" type="checkbox"/> Yes <input type="checkbox"/> No |
| 191712901001044 | <input checked="" type="checkbox"/> Yes <input type="checkbox"/> No |
| 191712901001087 | <input checked="" type="checkbox"/> Yes <input type="checkbox"/> No |
| 191712901001095 | <input checked="" type="checkbox"/> Yes <input type="checkbox"/> No |
| 191712901001108 | <input checked="" type="checkbox"/> Yes <input type="checkbox"/> No |
| 191712901001112 | <input checked="" type="checkbox"/> Yes <input type="checkbox"/> No |
| 191712901001119 | <input checked="" type="checkbox"/> Yes <input type="checkbox"/> No |
| 191712901001120 | <input checked="" type="checkbox"/> Yes <input type="checkbox"/> No |
| 191712901001121 | <input checked="" type="checkbox"/> Yes <input type="checkbox"/> No |
| 191712901001126 | <input checked="" type="checkbox"/> Yes <input type="checkbox"/> No |
| 191712901001129 | <input checked="" type="checkbox"/> Yes <input type="checkbox"/> No |
| 191712901001138 | <input checked="" type="checkbox"/> Yes <input type="checkbox"/> No |
| 191712901002003 | <input checked="" type="checkbox"/> Yes <input type="checkbox"/> No |
| 191712901002008 | <input checked="" type="checkbox"/> Yes <input type="checkbox"/> No |
| 191712901002016 | <input checked="" type="checkbox"/> Yes <input type="checkbox"/> No |
| 191712901002024 | <input checked="" type="checkbox"/> Yes <input type="checkbox"/> No |
| 191712901003001 | <input checked="" type="checkbox"/> Yes <input type="checkbox"/> No |
| 191712901003007 | <input checked="" type="checkbox"/> Yes <input type="checkbox"/> No |
| 191712901003008 | <input checked="" type="checkbox"/> Yes <input type="checkbox"/> No |
| 191712901003013 | <input checked="" type="checkbox"/> Yes <input type="checkbox"/> No |
| 191712901003015 | <input checked="" type="checkbox"/> Yes <input type="checkbox"/> No |

|                 |   |
|-----------------|---|
| 191712901003016 | <input checked="" type="checkbox"/> Yes <input type="checkbox"/> No |
| 191712901003018 | <input checked="" type="checkbox"/> Yes <input type="checkbox"/> No |
| 191712901003019 | <input checked="" type="checkbox"/> Yes <input type="checkbox"/> No |
| 191712901003020 | <input checked="" type="checkbox"/> Yes <input type="checkbox"/> No |
| 191712901003025 | <input checked="" type="checkbox"/> Yes <input type="checkbox"/> No |
| 191712901003028 | <input checked="" type="checkbox"/> Yes <input type="checkbox"/> No |
| 191712901003030 | <input checked="" type="checkbox"/> Yes <input type="checkbox"/> No |
| 191712901003033 | <input checked="" type="checkbox"/> Yes <input type="checkbox"/> No |
| 191712901003046 | <input checked="" type="checkbox"/> Yes <input type="checkbox"/> No |
| 191712901003090 | <input checked="" type="checkbox"/> Yes <input type="checkbox"/> No |
| 191712901003126 | <input checked="" type="checkbox"/> Yes <input type="checkbox"/> No |
| 191712901003129 | <input checked="" type="checkbox"/> Yes <input type="checkbox"/> No |
| 191712906004137 | <input checked="" type="checkbox"/> Yes <input type="checkbox"/> No |
| 190119602002030 | <input checked="" type="checkbox"/> Yes <input type="checkbox"/> No |
| 190119602002164 | <input checked="" type="checkbox"/> Yes <input type="checkbox"/> No |

**D. ADDITIONAL EXPLANATION** (To the extent you believe additional explanation is required to ensure that you are communicating full and accurate information, please use the below space to further explain, qualify, or substantiate your above certification/attestation/affirmation. To the extent necessary, please feel free to upload additional explanations/supporting documentation.)



|  |                       |
|--|-----------------------|
| <b>E. SIGNATURE*</b>                         |                       |
| <b>Authorized Signature:</b> Rebecca Shields | <b>Date:</b> 12/10/20 |
| <b>Printed Name:</b> Rebecca Shields         |                       |
| <b>Title:</b> Connection Specialist          |                       |

**\*PLEASE READ BEFORE SIGNING:** By signing and submitting this form, I, on my own behalf or as a representative of the company identified above, as applicable, expressly represent that I am authorized to make the above factual representation on behalf of said company and/or myself, as applicable, and under penalty of perjury as authorized by Iowa Code section 622.1 and pursuant to the laws of the state of Iowa, certify the following with respect to this form submitted on behalf of said company and/or myself: any statements, representations, warranties, certifications, or attestations made in this form, including any attachments or enclosures associated therewith, are true and accurate; I, on behalf of said company and/or myself, have not knowingly made any false statements or representations in this form. In addition to any criminal penalties authorized by Iowa Code section 720.2 that may result from any false statements of material fact made herein or any other remedies available at law, equity, or otherwise, if it is subsequently determined that I have made a statement, representation, warranty, certification, or attestation in this form, or any attachments or enclosures associated herewith, that is later proven untrue in any material respect, the company on which I submitted this form on behalf of may be disqualified from current incentive programs administered by the Office or may be ordered to repay the Office the entire amount of any funds previously distributed by the Office to said company in connection with any current incentive programs administered by the Office. OCIO makes no guarantees as to whether the information supplied by you will result in any change to the Broadband Availability Map V3 or the way any incentive decisions are reviewed, scored, or decided. This form, as completed, any attachments hereto, and any other information or materials submitted to the Office in connection with this form or related inquiry, shall be considered public records and shall be made available for public examination and/or disseminated upon request by third parties as required by Iowa Code chapter 22. The Office reserves the right to reject this form and relatedly consider any information communicated through this form as neither credible nor probative if this form is not fully and properly filled out.

# Appendix G - Keystone-Farmers Cooperative Telephone Company

## EXHIBIT B

Affirmation, Attestation, and Certification of Service or lack of Service in Census Blocks  
Broadband Grants Program Broadband Availability Map Challenge Process

|   |                              |   |
|---|------------------------------|---|
| <b>A. COMPANY INFORMATION (if submitted on behalf of an entity)</b> |                              |   |
| Company Name:   | Keystone Farmers Coop Tel Co |   |
| Address:  | 86 Main St                   |   |
| City:   | Keystone <del>IA</del>       | State: IA Zip: 52249                            |
| <b>B. DESIGNATED CONTACT INFORMATION</b>                            |                              |   |
| Contact Name  | Byron Kinn                   | Phone # 319.442.3241 Email: Keystone@net-us.net |
| <b>C. CERTIFICATION/ATTESTATION/AFFIRMATION</b>                     |                              |   |

In signing and submitting this form, the above-identified company, and its duly authorized representative signing on behalf thereof, hereby affirms, attests, and certifies under penalty of perjury that, as represented in its submission:

1. Company, consistent with the representations made in this form, and regardless of whether your company's prior reporting to the FCC or State of Iowa was correct or in error, either:
  - a. Facilitated material Broadband service at or above twenty-five (25) megabits per second of download speed and three (3) megabits per second of upload speed ("25/3 Broadband") in the identified census blocks as of July 31, 2020; or
  - b. Did **NOT** offer or Facilitate 25/3 Broadband in the identified census blocks as of July 31, 2020;

| CENSUS BLOCK ID IN WHICH 25/3 BROADBAND OFFERED OR FACILITATED | 25/3 Broadband materially FACILITATED AS OF July 31, 2020<br><small>Yes means 25/3 broadband was offered or facilitated as of July 31, 2020<br/>No means 25/3 broadband was not offered or facilitated as of July 31, 2020</small> |
|--|--|
| 190119602001172  | <input type="checkbox"/> Yes <input checked="" type="checkbox"/> No  |
| 190119602002012  | <input checked="" type="checkbox"/> Yes <input type="checkbox"/> No  |
| 190119602002014  | <input type="checkbox"/> Yes <input checked="" type="checkbox"/> No  |
| 190119602002021  | <input type="checkbox"/> Yes <input checked="" type="checkbox"/> No  |
| 191712901003001  | <input type="checkbox"/> Yes <input checked="" type="checkbox"/> No  |
| 191712901003090  | <input type="checkbox"/> Yes <input checked="" type="checkbox"/> No  |

200 EAST GRAND AVE., DES MOINES, IOWA 50309

515.281.5503  
CIO@IOWA.GOV



|                 |   |
|-----------------|---|
| 191712906004137 | <input type="checkbox"/> Yes <input checked="" type="checkbox"/> No |
| 190119602002030 | <input checked="" type="checkbox"/> Yes <input type="checkbox"/> No |
| 190119602002164 | <input type="checkbox"/> Yes <input checked="" type="checkbox"/> No |

**D. ADDITIONAL EXPLANATION** (To the extent you believe additional explanation is required to ensure that you are communicating full and accurate information, please use the below space to further explain, qualify, or substantiate your above certification/attestation/affirmation. To the extent necessary, please feel free to upload additional explanations/supporting documentation.)

**E. SIGNATURE\***

|  |                         |
|--|-------------------------|
| Authorized Signature: <i>Byran Kim</i> | Date: <i>11-25-2020</i> |
| Printed Name: <i>Byran Kim</i>         |                         |
| Title: <i>General Manager</i>          |                         |

**\*PLEASE READ BEFORE SIGNING:** By signing and submitting this form, I, on my own behalf or as a representative of the company identified above, as applicable, expressly represent that I am authorized to make the above factual representation on behalf of said company and/or myself, as applicable, and under penalty of perjury as authorized by Iowa Code section 622.1 and pursuant to the laws of the state of Iowa, certify the following with respect to this form submitted on behalf of said company and/or myself: any statements, representations, warranties, certifications, or attestations made in this form, including any attachments or enclosures associated therewith, are true and accurate; I, on behalf of said company and/or myself, have not knowingly made any false statements or representations in this form. In addition to any criminal penalties authorized by Iowa Code section 720.2 that may result from any false statements of material fact made herein or any other remedies available at law, equity, or otherwise, if it is subsequently determined that I have made a statement, representation, warranty, certification, or attestation in this form, or any attachments or enclosures associated herewith, that is later proven untrue in any material respect, the company on which I submitted this form on behalf of may be disqualified from current incentive programs administered by the Office or may be ordered to repay the Office the entire amount of any funds previously distributed by the Office to said company in connection with any current incentive programs administered by the Office. OCIO makes no guarantees as to whether the information supplied by you will result in any change to the Broadband Availability Map V3 or the way any incentive decisions are reviewed, scored, or decided. This form, as completed, any attachments hereto, and any other information or materials submitted to the Office in connection with this form or related inquiry, shall be considered public records and shall be made available for public examination and/or disseminated upon request by third parties as required by Iowa Code chapter 22. The Office reserves the right to reject this form and relatedly consider any information communicated through this form as neither credible nor probative if this form is not fully and properly filled out.