

ITQ 001

BIZ NUMBER: 507429

Map produced:
4/21/2023

Applicant: Southwest Iowa Planning Council

Application Name: Harrison County

Description:

Harrison county has identified a 7-mile radius circle centered on 1583 Sanford Place in Dunlap, IA that includes the rural areas around Dunlap and Woodbine, including Highway 30.

Point of contact: John McCurdy

Phone: (712) 243-4196

Email: john.mccurdy@swipco.org

Rank 59

Area (miles²) 74.441

Unserved locations 11

Underserved locations 68

Total served locations 79

Broadband Capital offered Yes

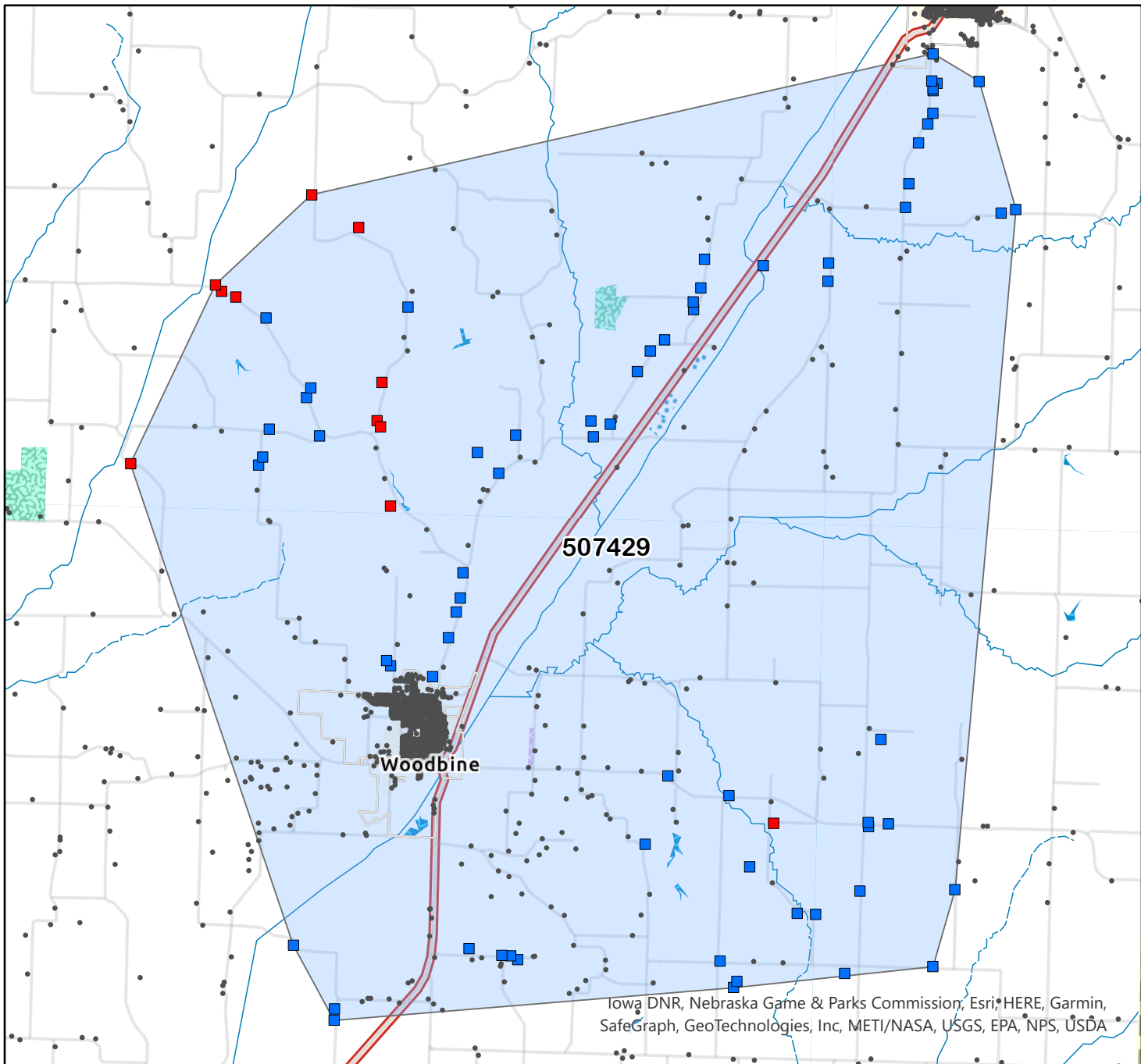
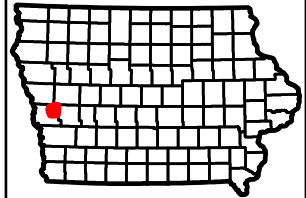
- Unserved
- Underserved
- Eligible Service
- Locations Outside of BIZ
- Ineligible Service Locations
- Broadband Intervention Zone

BIZ and Eligible Service Location Information:

Eligible service locations as in ITQ application.

Link to location file:

https://ocio.iowa.gov/ocio/ITQ001/Applications/507429_BIZ_ESL.csv



Iowa DNR, Nebraska Game & Parks Commission, Esri, HERE, Garmin, SafeGraph, GeoTechnologies, Inc, METI/NASA, USGS, EPA, NPS, USDA